

GRADUS

FLOORCOVERINGS COLLECTION 8

gerflor.co.uk
gerflor.ie
gradus.com





CONTENTS

Design your space	4
Create a floor scheme	6
Choose the right product	8
Floor plan examples	
Social Hub	10 - 13
Digital Agency	14 - 17
Architects Studio	18 - 21
University Learning Resource Centre	22 - 25
Care Home	26 - 29
Premium Floorcoverings	30
Creation 55 Looselay LVT	33, 35
NEW Lunar	37
Urban Myth	39, 41
Streetwise Style	43
Streetwise Design	45
SqMile ^{Exec}	47
Cityscene & Brickworks	49
Times Square	51
Emphasis	53
Stratus	55
Stratus Stripe	57
Adventurer	59
Carezone	61
Genus & Volnay	63
High Performance Contractor Floorcoverings	64
Lafite Connect	67, 69
Lafite Space	71, 73
Lafite Plains	75
Latour ²	77
Predator	79
Bodega	81
Hybrid Barrier Matting	82
Mat-in-a-Box 6000	85
Mat-in-a-Box 5000	86
Mat-in-a-Box 1550	87
Access 6000	89
Access 5000	89
Secondary Barrier Matting	90
Boulevard 7000	93
Boulevard Stripe	95
Boulevard 6000	97
Boulevard 5000	99
Boulevard 1500	101
Lok-Lift	103
Case Studies	104, 105
NEW Fundamentals	106, 107

Gradus Floorcoverings is a brand of the Gerflor Group and is a UK manufacturer of premium quality carpet tile and plank, broadloom and impervious backed carpets which excel in terms of functionality, aesthetics and ease of maintenance.

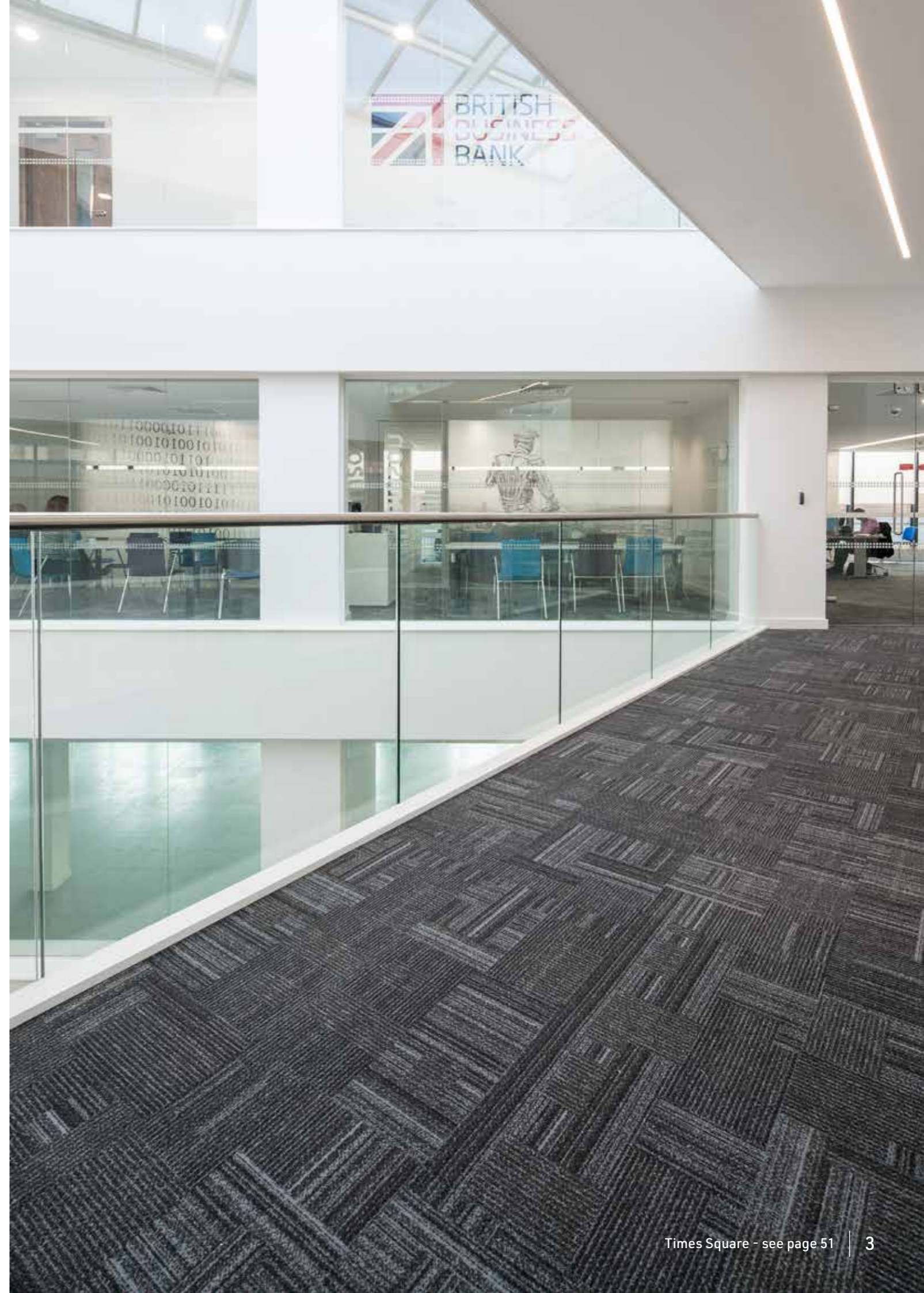
Utilising a range of high performance yarns, Gradus' extensive range of carpets are suitable for a wide variety of contract applications including commercial office, healthcare and education environments.

In addition, we also offer a range of looselay luxury vinyl tile from the Creation 55 range that complements our carpet tile offer.

ECONYL®
ENDLESS POSSIBILITIES

ECONYL® Regenerated Solution Dyed Nylon is produced using nylon waste which is recovered from oceans and from landfill. Waste such as fishing nets, fabric scraps, carpet and industrial plastic is recovered, sorted and cleaned. Through a regeneration and purification process, the nylon waste is recycled back into its original purity.

ECONYL® Regenerated Solution Dyed Nylon is processed into carpet yarn and used to manufacture several of our carpet tile ranges and barrier matting ranges.



DESIGN YOUR SPACE

Create a floor scheme

Explore the versatility of modular design, zoning and feature areas to create a unique floor scheme.

Choose the right product

Use the zonal performance chart to choose the right product for the right area.

Floor plan examples

Take inspiration from the floor plan examples to create a coordinated floor scheme.

Floorcoverings Collection

Choose from a selection of premium and high performance contractor floorcoverings including a wide range of carpets in tile, plank, broadloom and impervious formats and complementary loose-lay luxury vinyl tile designs.

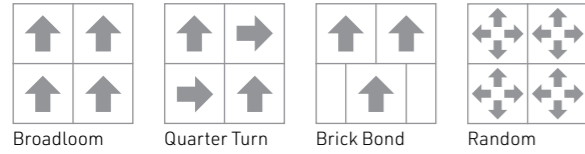


CREATE A FLOOR SCHEME

Explore the versatility of modular design, zoning and feature areas to create a unique floor scheme.

INSTALLATION METHODS

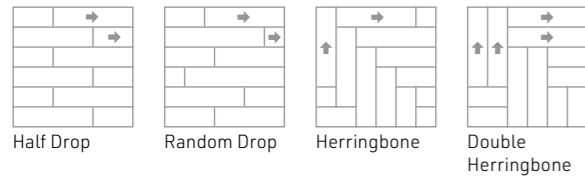
Carpet Tile



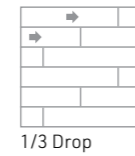
Looselay LVT Tile



Carpet Plank



Looselay LVT Plank



MODULAR DESIGN

Consider the versatility of tile and plank in both carpet and looselay LVT and choose from a range of different installation methods. Mix complementary tones together on the floor to create a unique floor design.



ZONING

Define spaces such as walkways and desk areas by combining different tones to create a gradual transition across the floor from one zone to another.



FEATURE AREAS

Combine colour contrast and use bright accent colours and bold installation methods to create a feature area or an exciting design statement.



CHOOSE THE RIGHT PRODUCT

Use the zonal performance chart to choose the right product for the right area.

	Format				Construction			Area of Application											Page
	Tile	Plank	Broadloom	Impervious	Cut Pile	Loop Pile	Luxury Vinyl Tile (LVT)	Commercial Office	Commercial Office Circulation	Commercial Office Reception	Education Accommodation	Education Circulation	Education Classroom	Education Office	Healthcare Bedroom	Healthcare Circulation	Healthcare Lounge	Healthcare Office	
PREMIUM FLOORCOVERINGS																			
Creation 55 Looselay LVT	•	•					•	•	•	•	•	•	•	•				33, 35	
Lunar	•					•	•	•	•	•	•	•	•		•		•	37	
Urban Myth	•	•				•	•	•	•	•	•	•	•		•		•	39,41	
Streetwise Style	•					•	•	•	•	•	•	•	•		•		•	43	
Streetwise Design	•					•	•	•	•	•	•	•	•		•		•	45	
SqMile ^{Exec}	•				•		•	•	•	•	•	•	•		•		•	47	
Cityscene & Brickworks	•					•	•	•	•	•	•	•	•		•		•	49	
Times Square	•					•	•	•	•	•	•	•	•		•		•	51	
Emphasis	•				•	•	•	•	•	•	•	•	•		•		•	53	
Stratus	•					•	•	•	•	•	•	•	•		•		•	55	
Stratus Stripe	•					•	•	•	•	•	•	•	•		•		•	57	
Adventurer	•			•		•	•	•	•	•	•	•	•	•	•	•	•	59	
Carezone				•	•	•				•				•	• ¹	•		61	
Genus & Volnay	•		•	•	•		•	•	•	•	•	•	•	•	•	•	•	63	
HIGH PERFORMANCE CONTRACTOR FLOORCOVERINGS																			
Lafite Connect	•					•	•	•	•	•	•	•	•		•		•	67,69	
Lafite Space	•	•				•	•	•	•	•	•	•	•		•		•	71,73	
Lafite Plains	•					•	•	•	•	•	•	•	•		•		•	75	
Latour ²	•					•	•	•	•	•	•	•	•		•		•	77	
Predator	•					•	•	•	•	•	•	•	•				•	79	
Bodega	•		•	•		•	•		•	•	•	•	•	•	•	•	•	81	

¹ Carezone Textured Loop

FLOOR PLAN EXAMPLES

Take inspiration from the floor plan examples to create a coordinated floor scheme.

SOCIAL HUB

Streetwise Style with Creation 55 Looseley LVT



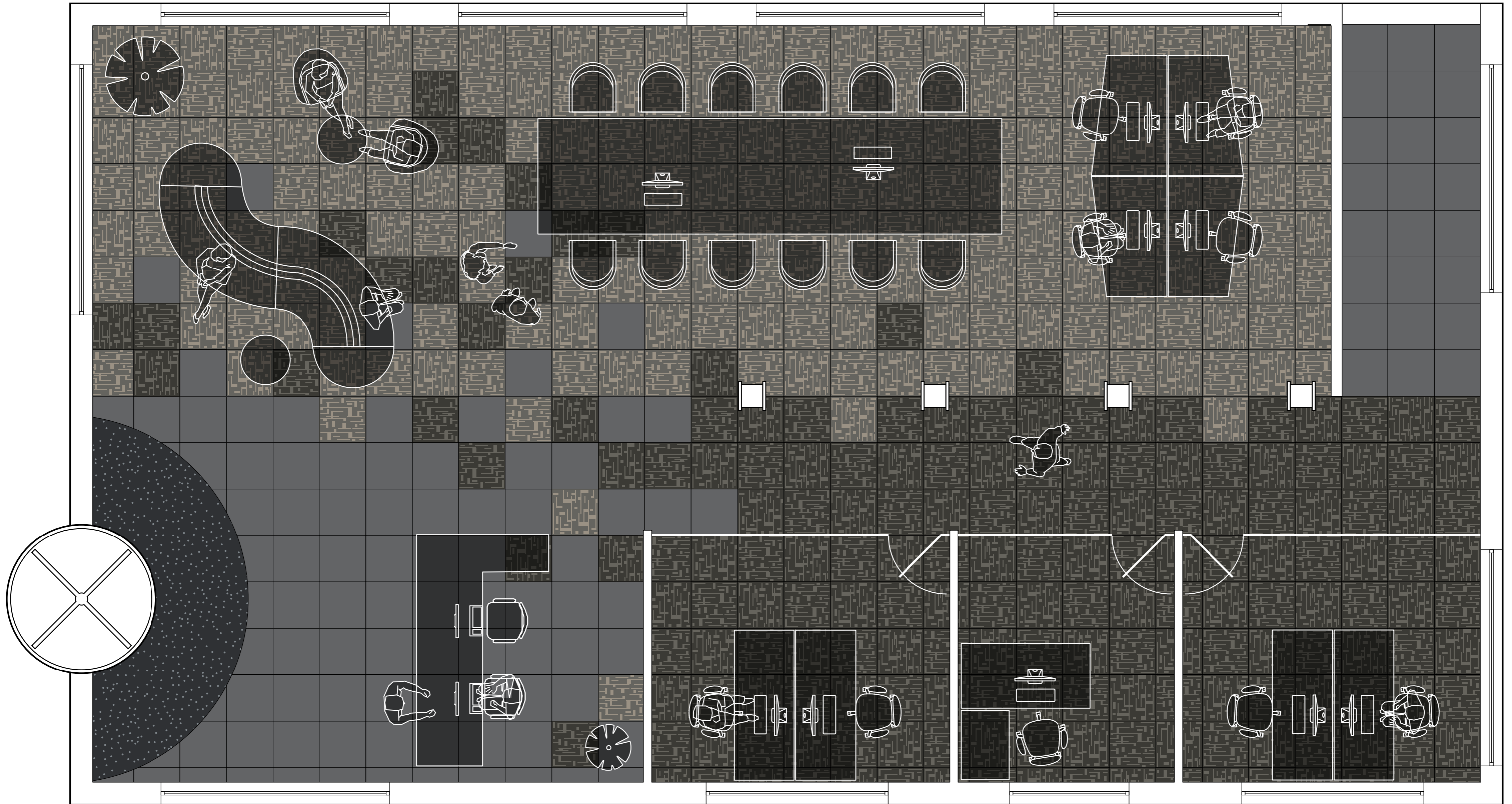
See pages 12-13 for floor plan and colourways

SOCIAL HUB - Floor Plan

Streetwise Style with Creation 55 Looselay LVT

Combine contrasting tones to create a feature in specific areas such as social spaces and breakout areas.

Use looselay LVT to complement carpet tile and experiment with modular design to create a unique statement.



Streetwise Style
Trend | Tempo 00546



Streetwise Style
Trend | Rhythm 00547



Creation 55 Looselay LVT
Norwegian Stone 0860



Boulevard 6000
Nickel

DIGITAL AGENCY

Lafite Space with Emphasis



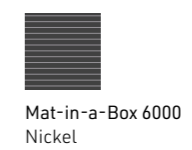
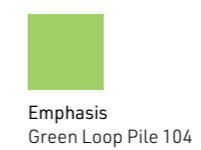
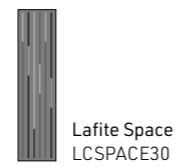
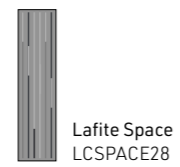
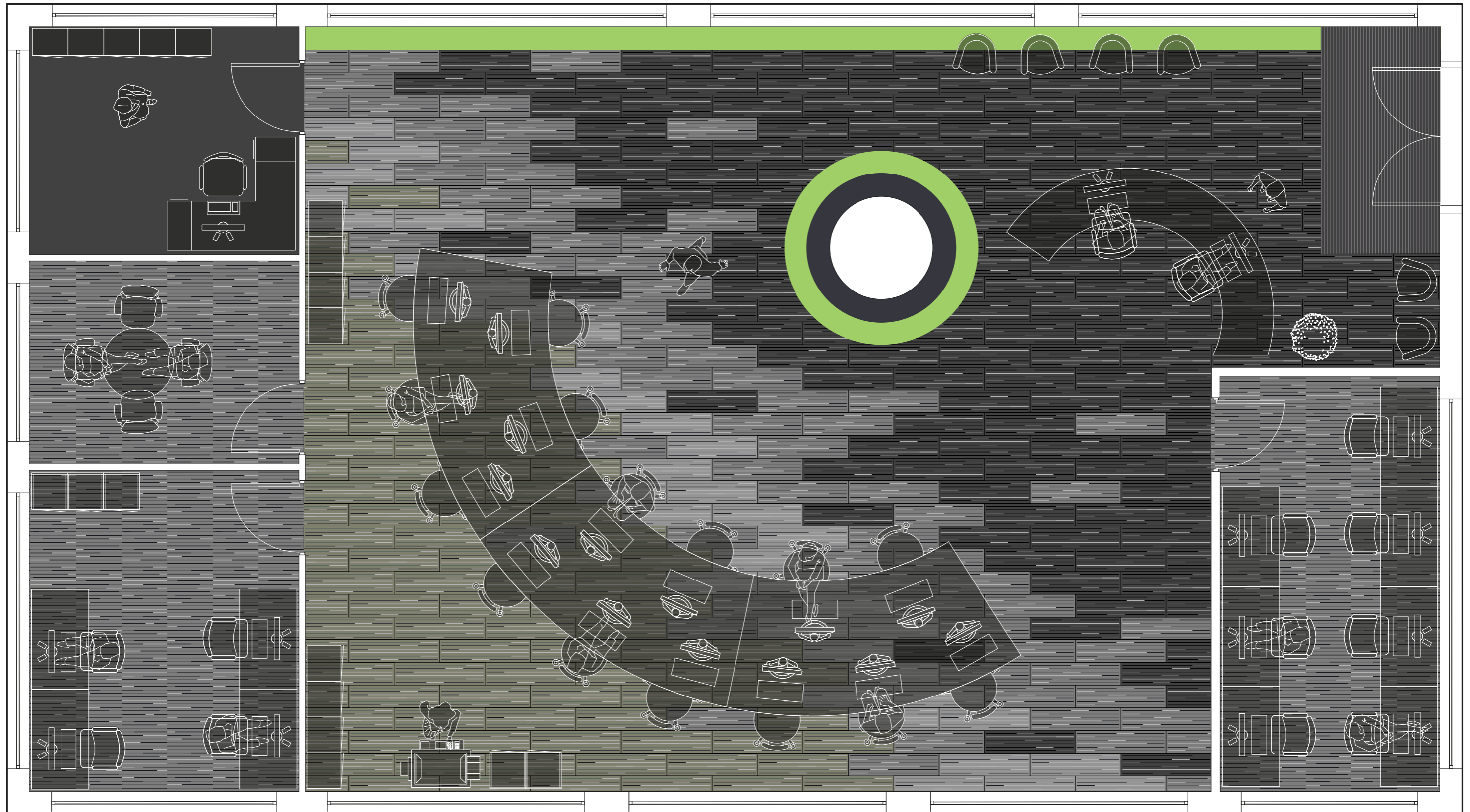
See pages 16-17 for floor plan and colourways

DIGITAL AGENCY - Floor Plan

Lafite Space with Emphasis

Combine different base tones to create a gradual transition across the floor from one zone to another.

Use tile and plank in different areas and choose complementary colours to create a coordinated design scheme.



ARCHITECTS STUDIO

Urban Myth



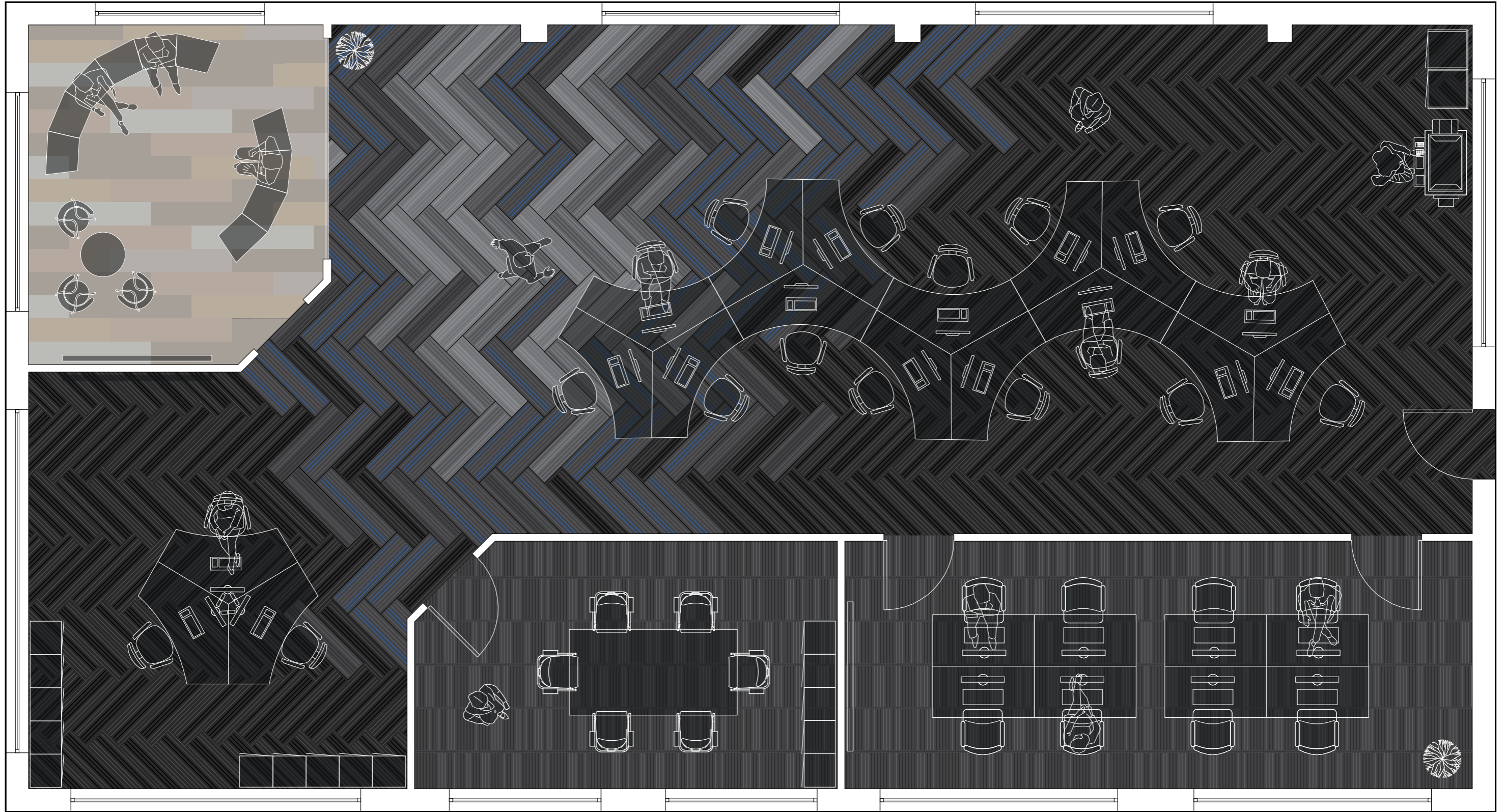
See pages 20-21 for floor plan and colourways

ARCHITECTS STUDIO - Floor Plan

Urban Myth

Experiment with colour contrast and bright accent colours to create a feature area.

Combine carpet tile, plank and looselay LVT to create a unique floor scheme.



Urban Myth
Sapphire 07310

Urban Myth
Carbon 07306

Urban Myth
Graphite 07305

Urban Myth
Lead 07304

Urban Myth
Steel 07303

Urban Myth
Pewter 07302

Creation 55 Looselay LVT
Ranch 0456

Urban Myth
Graphite 07305

UNIVERSITY LEARNING RESOURCE CENTRE

Streetwise Design with Emphasis



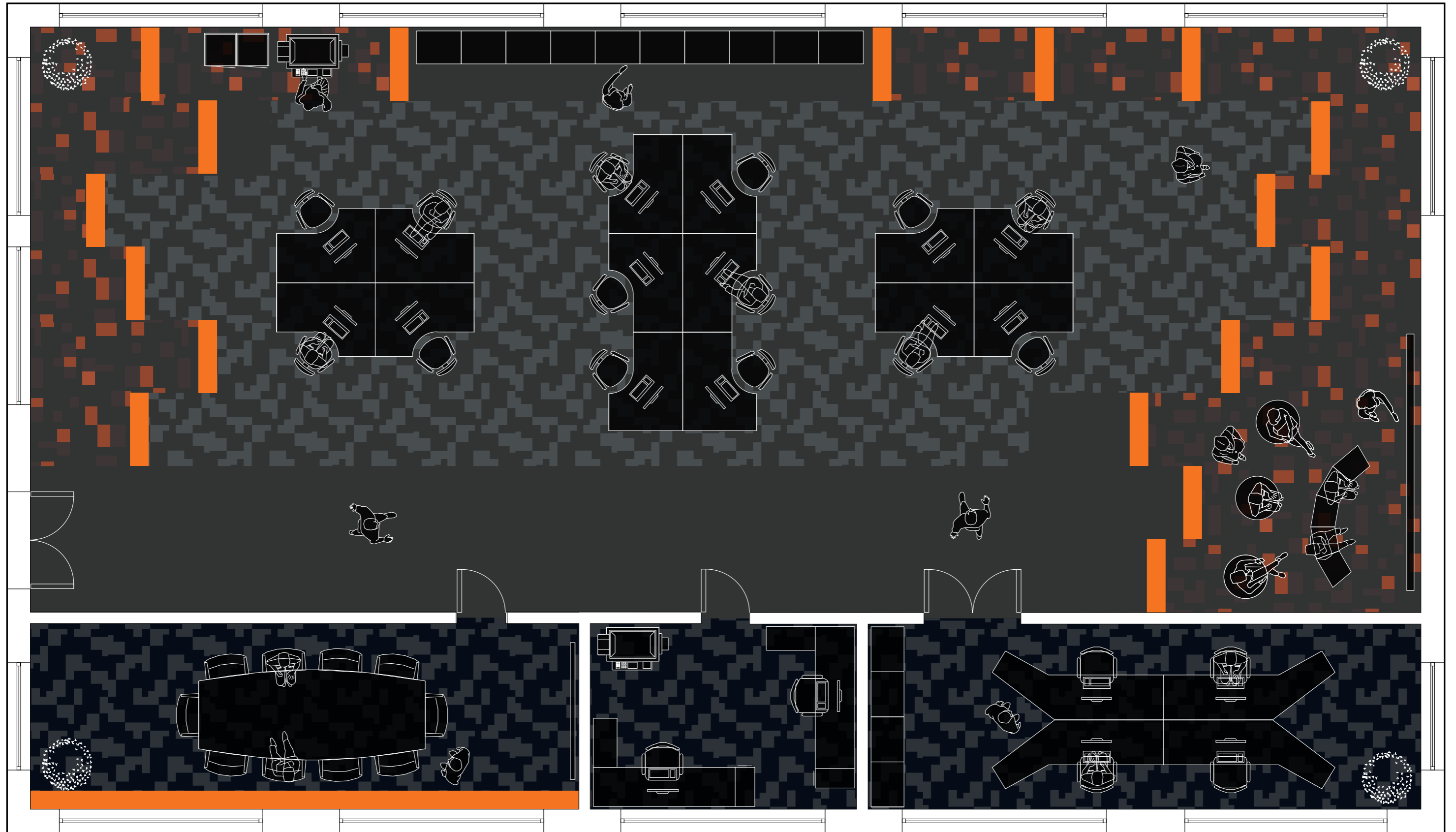
See pages 24-25 for floor plan and colourways

UNIVERSITY LEARNING RESOURCE CENTRE - Floor Plan

Streetwise Design with Emphasis

Use bright accent colours to create feature areas or an exciting design statement.

Create specific zones such as walkways and breakout areas by using different designs, base tones and textures.



Streetwise Design
Orange 07201



Streetwise Design
Iron 773



Streetwise Design
Coal 778



Stratus
Jet Stream 06506



Emphasis
Orange Loop Pile 102

CARE HOME

Carezone



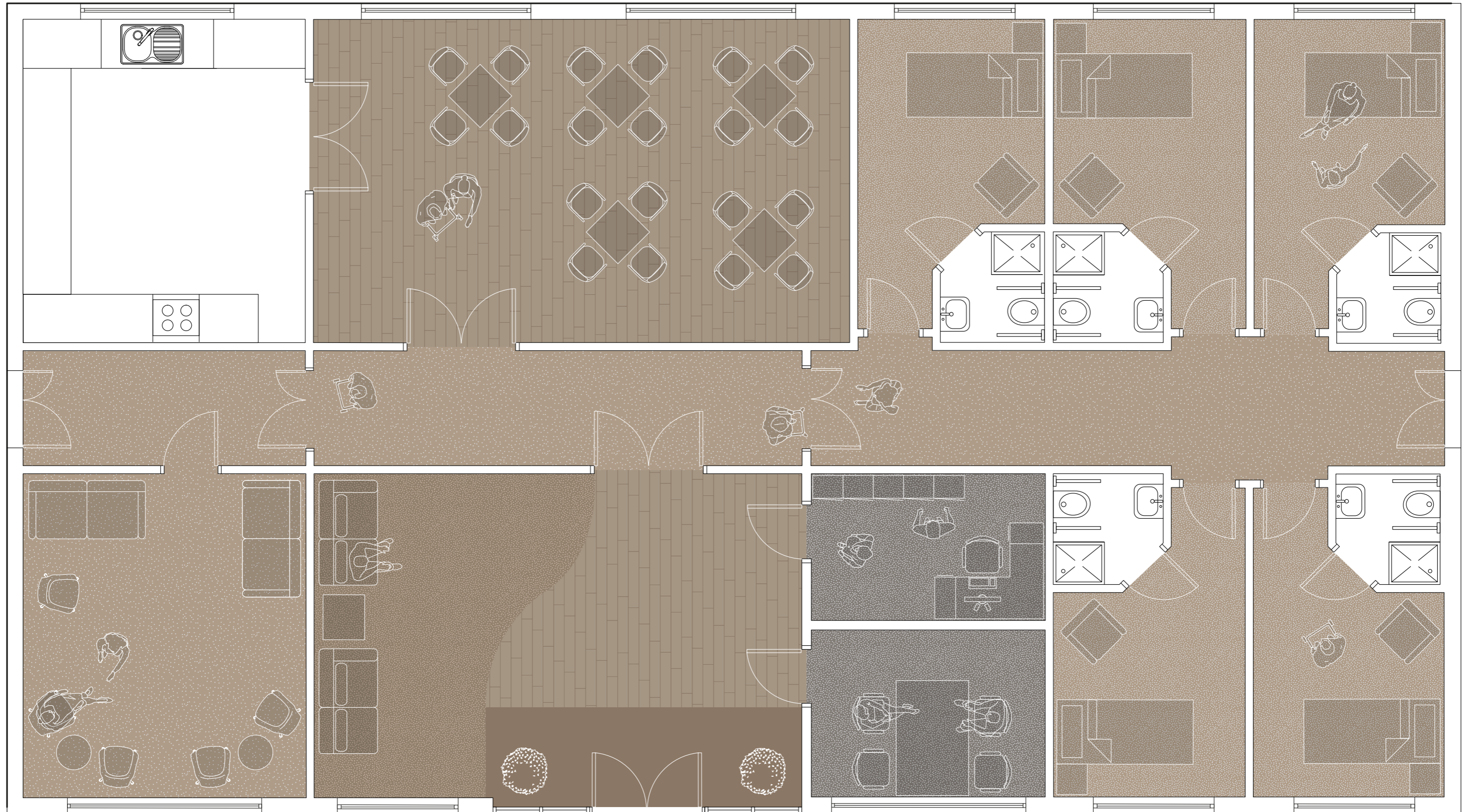
See pages 28-29 for floor plan and colourways

CARE HOME - Floor Plan

Carezone

Combine natural colours of similar tonal contrast on the floor to create an inclusive environment which is easy to navigate.

Create a comfortable and safe environment which supports the needs of the individual and promotes independent living.



Carezone
Natural Truffle
Cut Pile 07103



Carezone
Soft Taupe
Cut Pile 07102



Carezone
Soft Taupe
Textured Loop 07116



Stratus
Arctic Mist 06512



Boulevard 5000
Corncrake



Safety Flooring (sheet)
Taralay Impression Control
Esterel Chocolate 0518

PREMIUM FLOORCOVERINGS

- Premium design and quality to suit the performance requirements of any area be it a commercial office, education or healthcare application
- Complementary yarn systems and colour bank provide coordinated design schemes

Product range

Creation 55 Looselay LVT	33, 35
NEW Lunar	37
Urban Myth	39, 41
Streetwise Style	43
Streetwise Design	45
SqMile ^{Exec}	47
Cityscene & Brickworks.....	49
Times Square	51
Emphasis	53
Stratus	55
Stratus Stripe	57
Adventurer.....	59
Carezone	61
Genus & Volnay.....	63





CREATION 55 Looselay LVT Plank

Woods



Twist 0504
LRV 37.0



Malua Bay 0448
LRV 45.6



Long Board 0455
LRV 29.8



Arena 0060
LRV 35.0



Honey Oak 0441
LRV 29.8



Swiss Oak Pearl 0846
LRV 37.1



Ballerina 0347
LRV 25.7



Ranch 0456
LRV 27.9



Swiss Oak Golden 0796
LRV 24.5



Amador 0447
LRV 28.2

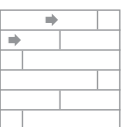
Samples

An accurate colour match can only be achieved by requesting the relevant product sample(s) from Gradus Technical Support on 01625 428922.



Specification:	Plank
Product Dimensions	229mm x 1220mm
Weight	7500 g/m ²
Wear Layer Thickness	0.55mm
Total Thickness	4.5mm

For full specification information visit www.gradus.com

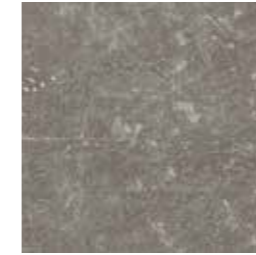


1/3 Drop



CREATION 55 Looselay LVT Tile

Minerals



Carmel 0618
LRV 19.2

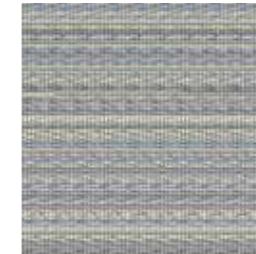


Parker Station 0374
LRV 11.4

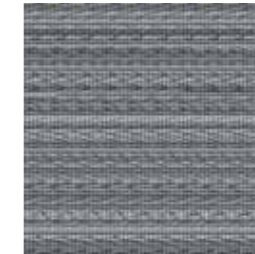


Norwegian Stone 0860
LRV 10.3

Textiles



Ponto Cruz Navy 0876
LRV 34.8



Ponto Cruz City 0878
LRV 26.3

Samples

An accurate colour match can only be achieved by requesting the relevant product sample(s) from Gradus Technical Support on 01625 428922.



Specification:	Tile
Product Dimensions	500mm x 500mm
Weight	7500 g/m ²
Wear Layer Thickness	0.55mm
Total Thickness	4.5mm

For full specification information visit www.gradus.com



Quarter Turn



Main floor space - Ponto Cruz City 0878, offices - Ranch 0456



NEW LUNAR



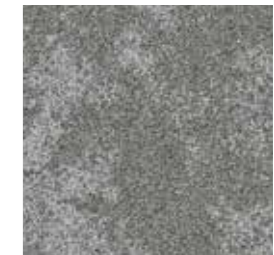
Janssen 07401
LRV 16.59



Moretus 07402
LRV 15.92



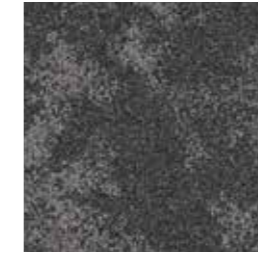
Alpes 07403
LRV 9.83



Picard 07406
LRV 11.68



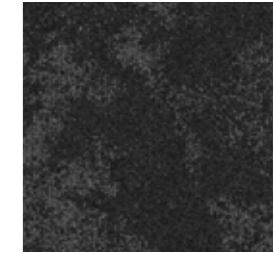
Stadius 07404
LRV 5.59



Rook 07405
LRV 5.55



Jura 07407
LRV 3.27



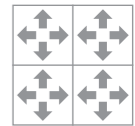
Moro 07408
LRV 2.08

Samples

An accurate colour match can only be achieved by requesting the relevant product sample(s) from Gradus Technical Support on 01625 428922.



Specification:	Tile
Product Dimensions	500mm x 500mm
Product Construction	Tufted Loop Pile
Surface Yarn	100% Solution Dyed Nylon
Total Carpet Weight	3600 g/m ²
Tufted Pile Weight	610 g/m ²
Primary Backing	Non-woven
Secondary Backing	Bitumen
Total Carpet Thickness	6mm
For full specification information visit www.gradus.com	



Random

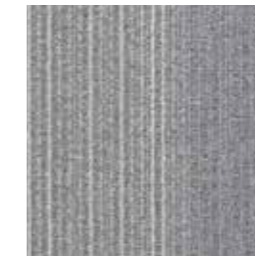


URBAN MYTH

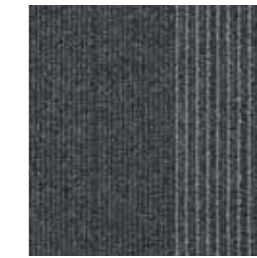
Tile



Citrine 07307
LRV 14.26



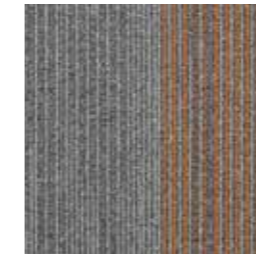
Quartz 07301
LRV 20.78



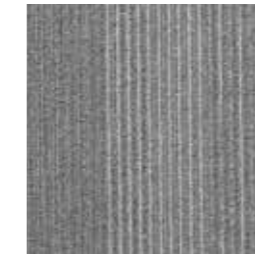
Lead 07304
LRV 6.02



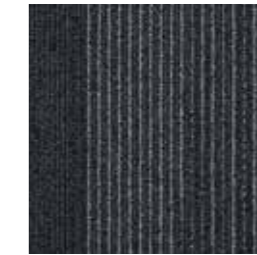
Sapphire 07310
LRV 6.13



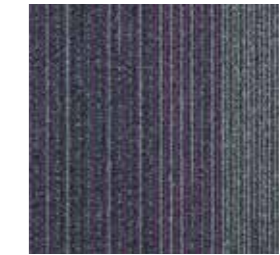
Amber 07308
LRV 12.98



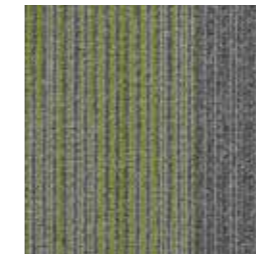
Pewter 07302
LRV 11.74



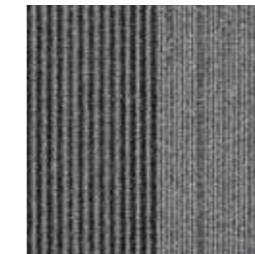
Graphite 07305
LRV 5.98



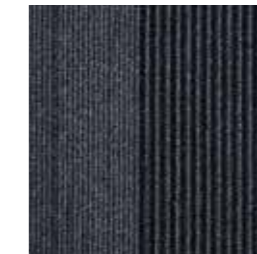
Amethyst 07311
LRV 6.49



Peridot 07309
LRV 13.44



Steel 07303
LRV 11.29



Carbon 07306
LRV 2.43



Ruby 07312
LRV 6.99

Samples

An accurate colour match can only be achieved by requesting the relevant product sample(s) from Gradus Technical Support on 01625 428922.



Specification:	Tile
Product Dimensions	500mm x 500mm
Product Construction	Tufted 1/12th Gauge Loop Pile
Surface Yarn	100% Solution Dyed Nylon 6.0
Total Carpet Weight	4110 g/m ²
Tufted Pile Weight	650 g/m ²
Primary Backing	Non-woven Polyester
Secondary Backing	Bitumen
Total Carpet Thickness	6mm

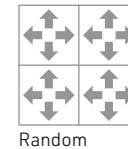
For full specification information visit www.gradus.com



Quarter Turn



Brick Bond



Random



Environmental Profiles
Cert No. ENP 534

BRE Global (BREEAM):

Urban Myth achieves either A+ or A across all BREEAM defined building applications against which it has been assessed. For specific ratings visit: www.greenbooklive.com

Urban Myth carpet tiles feature a selection of random designs (examples shown below)

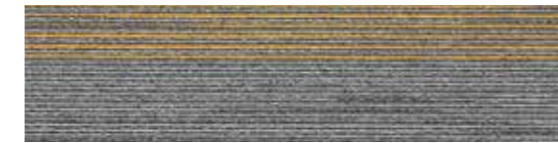


continued...

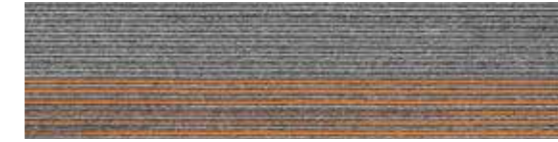


URBAN MYTH

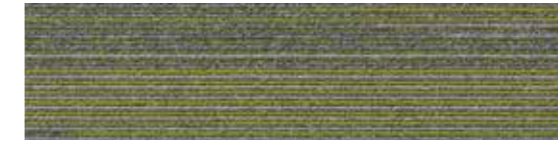
Plank



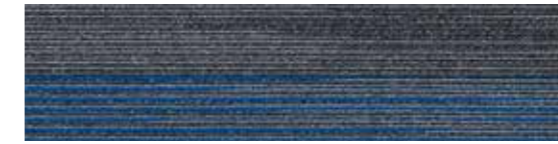
Citrine 07307
LRV 14.26



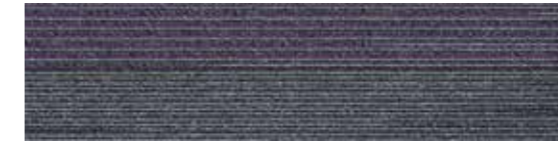
Amber 07308
LRV 12.98



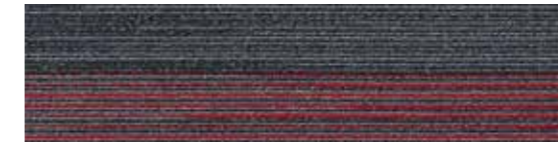
Peridot 07309
LRV 13.44



Sapphire 07310
LRV 6.13



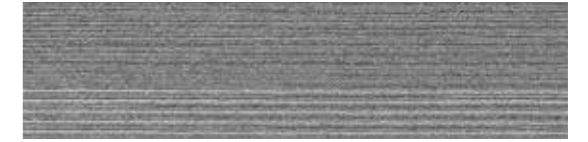
Amethyst 07311
LRV 6.49



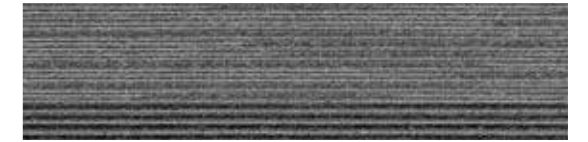
Ruby 07312
LRV 6.99



Quartz 07301
LRV 20.78



Pewter 07302
LRV 11.74



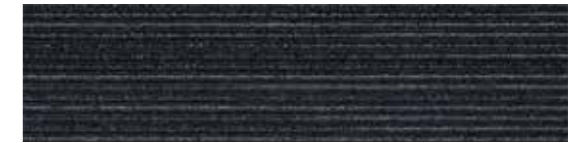
Steel 07303
LRV 11.29



Lead 07304
LRV 6.02



Graphite 07305
LRV 5.98



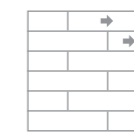
Carbon 07306
LRV 2.43

Samples

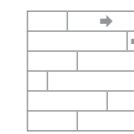
An accurate colour match can only be achieved by requesting the relevant product sample(s) from Gradus Technical Support on 01625 428922.



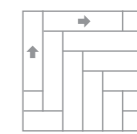
Specification:	Plank
Product Dimensions	250mm x 1000mm
Product Construction	Tufted 1/12th Gauge Loop Pile
Surface Yarn	100% Solution Dyed Nylon 6.0
Total Carpet Weight	4110 g/m ²
Tufted Pile Weight	650 g/m ²
Primary Backing	Non-woven Polyester
Secondary Backing	Bitumen
Total Carpet Thickness	6mm
For full specification information visit www.gradus.com	



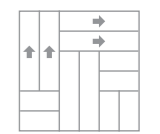
Half Drop



Random Drop



Herringbone



Double Herringbone

Urban Myth carpet planks feature a selection of random designs



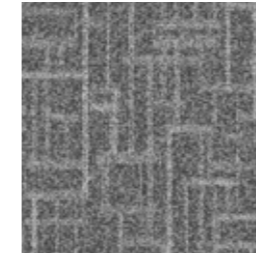
Environmental Profiles
Cert No. ENP 534

BRE Global (BREEAM):
Urban Myth achieves either A+ or A across all BREEAM defined building applications against which it has been assessed.
For specific ratings visit: www.greenbooklive.com

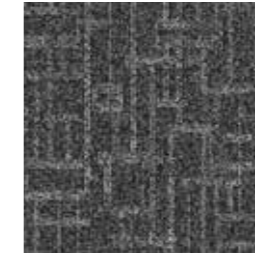


STREETWISE STYLE

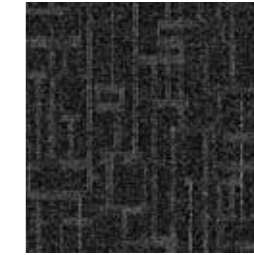
Trend



Focus 00573
LRV 8.37



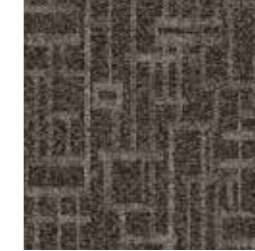
Cypher 00575
LRV 6.63



Canon 00578
LRV 3.37

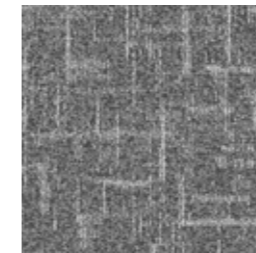


Tempo 00546
LRV 11.40



Rhythm 00547
LRV 5.55

Flair



Focus 06774
LRV 8.91



Cypher 06779
LRV 6.73



Canon 06770
LRV 3.52



Tempo 06776
LRV 12.52



Rhythm 06778
LRV 5.56

Samples

An accurate colour match can only be achieved by requesting the relevant product sample(s) from Gradus Technical Support on 01625 428922.



Specification:	Trend	Flair
Product Dimensions	500mm x 500mm	500mm x 500mm
Product Construction	Tufted Loop Pile	Tufted Loop Pile
Surface Yarn	100% Solution Dyed Nylon	100% Solution Dyed Nylon
Total Carpet Weight	4614 g/m ²	4334 g/m ²
Tufted Pile Weight	520 g/m ²	500 g/m ²
Primary Backing	Non-woven	Non-woven
Secondary Backing	Bitumen	Bitumen
Total Carpet Thickness	6.3mm	6.1mm

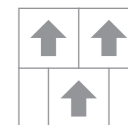
For full specification information visit www.gradus.com



Broadloom
Flair



Quarter Turn
Trend
Flair

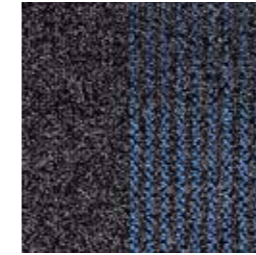


Brick Bond
Trend
Flair

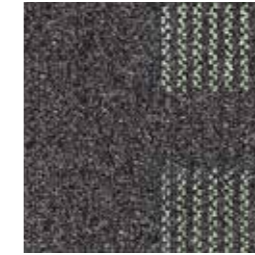


STREETWISE DESIGN

Brights



Blue 07204
LRV 4.33



Green 07203
LRV 5.95



Orange 07201
LRV 4.08

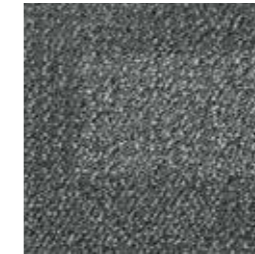


Red 07202
LRV 4.08

Originals



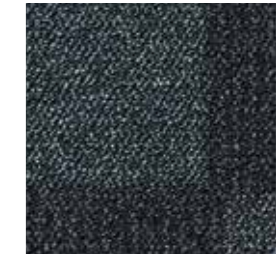
Slate 754
LRV 8.12



Flint 772
LRV 7.08



Iron 773
LRV 5.34



Coal 778
LRV 1.95



Clay 790
LRV 14.42

Emphasis is ideal for accents and features to create interest, page 53

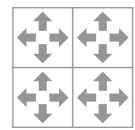
Samples

An accurate colour match can only be achieved by requesting the relevant product sample(s) from Gradus Technical Support on 01625 428922.



Specification:	Tile
Product Dimensions	500mm x 500mm
Product Construction	Tufted Loop Pile
Surface Yarn	100% Solution Dyed Nylon
Total Carpet Weight	4500 g/m ²
Tufted Pile Weight	650 g/m ²
Primary Backing	Non-woven
Secondary Backing	Bitumen
Total Carpet Thickness	7mm

For full specification information visit www.gradus.com



Random



Environmental Profiles
Cert No. ENP 399

BRE Global (BREEAM):

Streetwise Design achieves either A+ or A across all BREEAM defined building applications against which it has been assessed. For specific ratings visit: www.greenbooklive.com

Streetwise Design carpet tiles feature a selection of random designs (examples shown below)



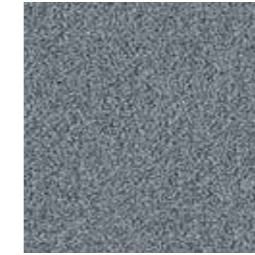


SQMILE^{EXEC}

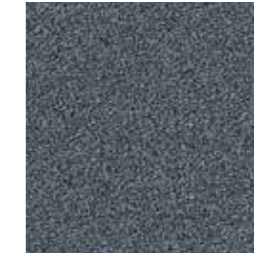
Plains



Bank 01313
LRV 9.02



Euston 01314
LRV 9.12



Westminster 01315
LRV 5.61



Farringdon 01310
LRV 1.80

Stripes



Central Line 01355



District Line 01366

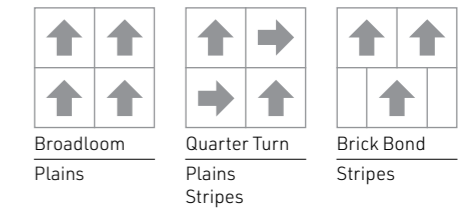
Samples

An accurate colour match can only be achieved by requesting the relevant product sample(s) from Gradus Technical Support on 01625 428922.



Specification:	Tile
Product Dimensions	500mm x 500mm
Product Construction	Tufted Cut Pile
Surface Yarn	ECONYL [®] Regenerated SDN
Total Carpet Weight	5147 g/m ²
Tufted Pile Weight	1100 g/m ²
Primary Backing	Non-woven
Secondary Backing	Bitumen
Total Carpet Thickness	8.7mm

For full specification information visit www.gradus.com



Environmental Profiles
Cert No. ENP 399

BRE Global (BREEAM):

For specific ratings visit: www.greenbooklive.com



CITYSCENE & BRICKWORKS

Cityscene



Tin 21 07501
LRV 17.12



Shale 21 07503
LRV 11.13



Granite 21 07505
LRV 8.39



Claystone 21 07502
LRV 12.54



Rhyolite 21 07504
LRV 9.92



Basalt 21 07506
LRV 3.25

Brickworks



Ironstone 06707
LRV 10.02



Tonbridge 06711
LRV 4.98



Himley 06709
LRV 3.68

Samples

An accurate colour match can only be achieved by requesting the relevant product sample(s) from Gradus Technical Support on 01625 428922.



antron. @

Specification:	Cityscene Tile	Brickworks Tile
Product Dimensions	500mm x 500mm	500mm x 500mm
Product Construction	Tufted Loop Pile	Tufted Textured Pattern Loop Pile
Surface Yarn	100% Solution Dyed Nylon	100% Antron® Lumena™ Solution Dyed Nylon 6.6
Total Carpet Weight	3880 g/m ²	4290 g/m ²
Tufted Pile Weight	650 g/m ²	800 g/m ²
Primary Backing	Non-woven	Non-woven
Secondary Backing	Bitumen	Bitumen
Total Carpet Thickness	5.8mm	6.5mm

For full specification information visit www.gradus.com



Environmental Profiles
Cert No. ENP 433 & 442

BRE Global (BREEAM):

Cityscene & Brickworks achieve either A+ or A across all BREEAM defined building applications against which they have been assessed. For specific ratings visit: www.greenbooklive.com



Broadloom
Cityscene



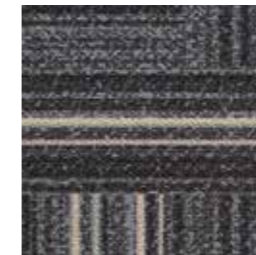
Quarter Turn
Cityscene
Brickworks



Brick Bond
Cityscene
Brickworks



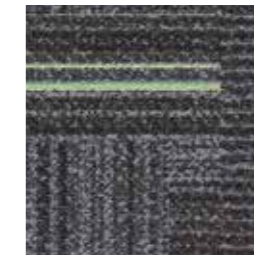
TIMES SQUARE



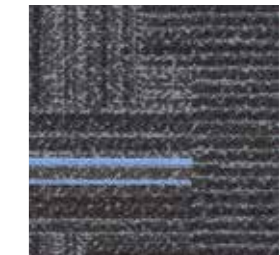
Natural 06602
LRV 3.80



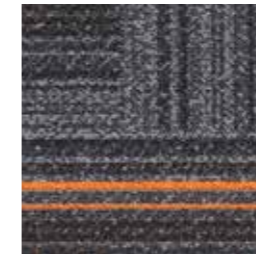
Yellow 06603
LRV 4.36



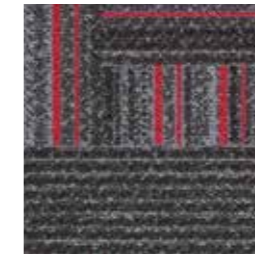
Lime 06606
LRV 4.98



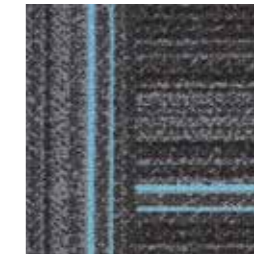
Lilac 06607
LRV 5.21



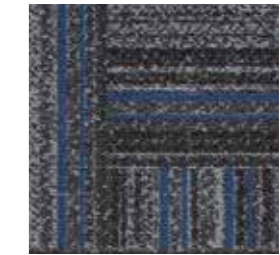
Orange 06604
LRV 6.95



Red 06605
LRV 4.51



Light Blue 06608
LRV 5.28



Dark Blue 06611
LRV 3.93



Grey 06601
LRV 4.56



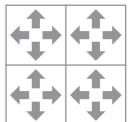
Light Grey 07700
LRV 7.67

Samples

An accurate colour match can only be achieved by requesting the relevant product sample(s) from Gradus Technical Support on 01625 428922.



Specification:	Tile
Product Dimensions	500mm x 500mm
Product Construction	Tufted Loop Pile
Surface Yarn	100% Nylon
Total Carpet Weight	3700 g/m ²
Tufted Pile Weight	420 g/m ²
Primary Backing	Non-woven
Secondary Backing	90% Recycled Content Polyurethane Cushion
Total Carpet Thickness	8.6mm
For full specification information visit www.gradus.com	



Random



Times Square features 6 unique designs in each colourway.





EMPHASIS



Green
Loop Pile 104 LRV 18.50
Cut Pile 444 LRV 18.10



Gold
Loop Pile 101 LRV 25.24
Cut Pile 777 LRV 24.85



Orange
Loop Pile 102 LRV 16.36
Cut Pile 666 LRV 15.31



Red
Loop Pile 103 LRV 7.75
Cut Pile 555 LRV 7.38



Sky
Loop Pile 105 LRV 24.46
Cut Pile 333 LRV 24.77



Blue
Loop Pile 106 LRV 4.93
Cut Pile 222 LRV 4.56

Emphasis should only be used as an accent colour to complement other product ranges. Emphasis should not be used as a field colour or in areas of heavy traffic such as doorway thresholds.

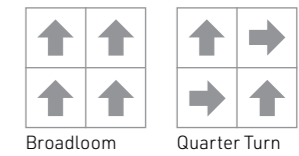
Samples

An accurate colour match can only be achieved by requesting the relevant product sample(s) from Gradus Technical Support on 01625 428922.



Specification:	Loop Tile	Cut Tile
Product Dimensions	500mm x 500mm	500mm x 500mm
Product Construction	Tufted Loop Pile	Tufted Cut Pile
Surface Yarn	ECONYL® Regenerated SDN	ECONYL® Regenerated SDN
Total Carpet Weight	4200 g/m ²	4350 g/m ²
Tufted Pile Weight	615 g/m ²	750 g/m ²
Primary Backing	Non-woven	Non-woven
Secondary Backing	Bitumen	Bitumen
Total Carpet Thickness	6.8mm	7.5mm

For full specification information visit www.gradus.com



Environmental Profiles
Cert No. ENP 399

BRE Global (BREEAM):

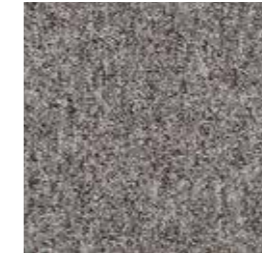
Emphasis achieves either A+ or A across all BREEAM defined building applications against which it has been assessed. For specific ratings visit: www.greenbooklive.com



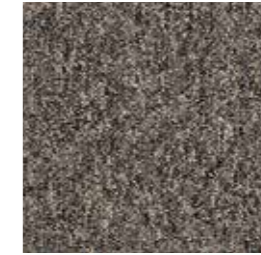
STRATUS



Avalanche 06509
LRV 16.27



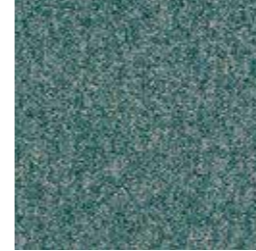
Arctic Mist 06512
LRV 13.94



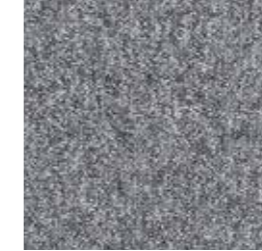
Typhoon 06502
LRV 8.73



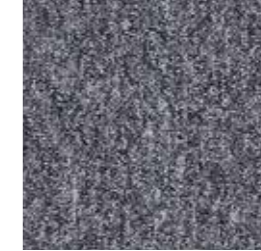
Firestorm 06510
LRV 7.96



Valley Breeze 06501
LRV 9.45



Rainfall 06503
LRV 11.47



Storm Surge 06504
LRV 6.16



Jet Stream 06506
LRV 3.56



Ice Storm 06514
LRV 11.22



Ocean Tide 06507
LRV 7.50



Solar Blue 06513
LRV 3.71



Blue Ridge 06505
LRV 3.96

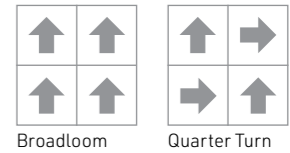
Samples

An accurate colour match can only be achieved by requesting the relevant product sample(s) from Gradus Technical Support on 01625 428922.



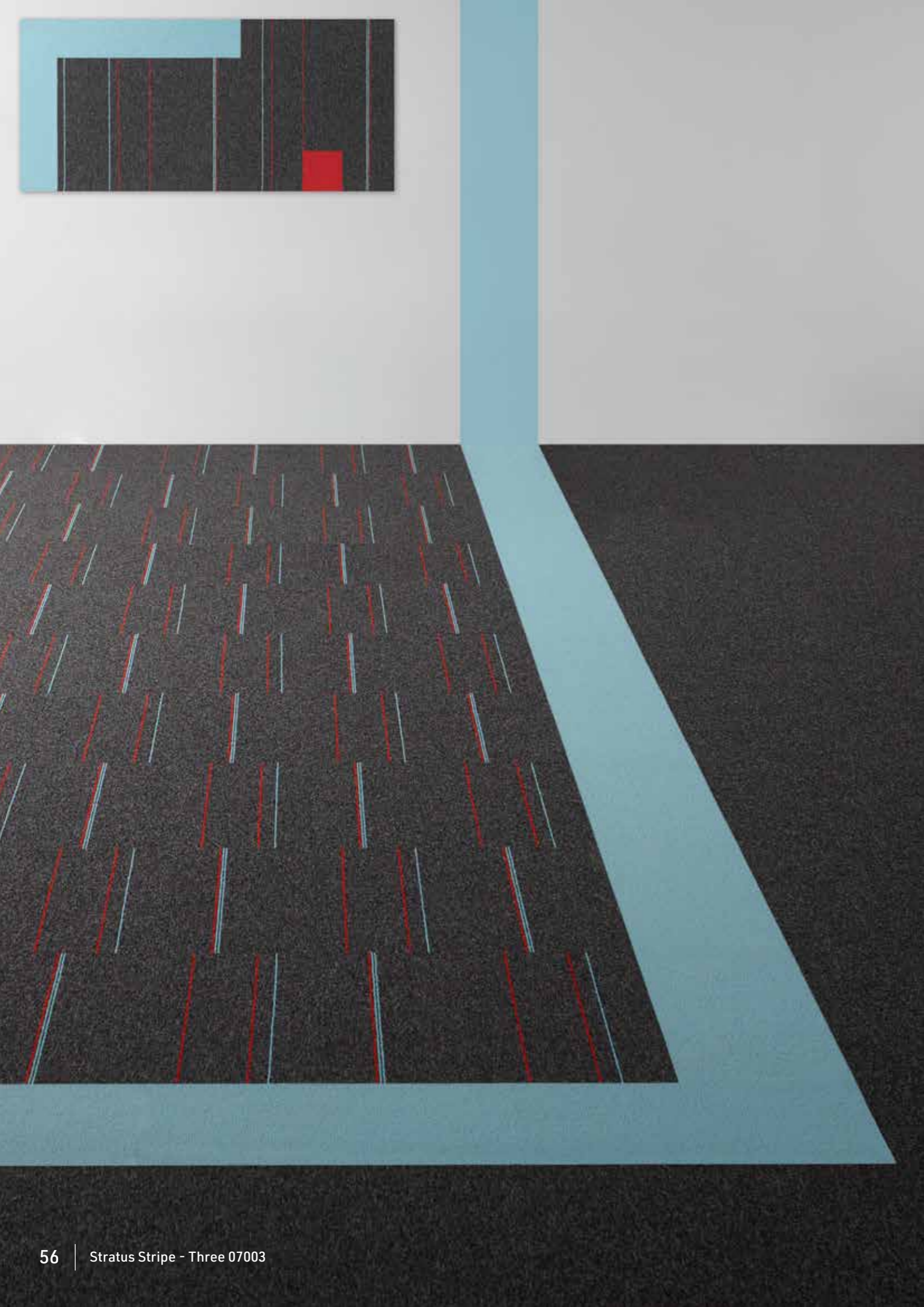
Specification:	Tile
Product Dimensions	500mm x 500mm
Product Construction	Tufted Loop Pile
Surface Yarn	ECONYL® Regenerated SDN
Total Carpet Weight	4585 g/m ²
Tufted Pile Weight	615 g/m ²
Primary Backing	Non-woven
Secondary Backing	Bitumen
Total Carpet Thickness	6.8mm

For full specification information visit www.gradus.com

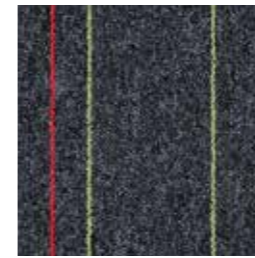


BRE Global (BREEAM):

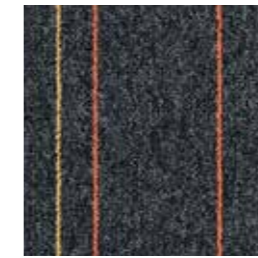
Stratus achieves either A+ or A across all BREEAM defined building applications against which it has been assessed. For specific ratings visit: www.greenbooklive.com



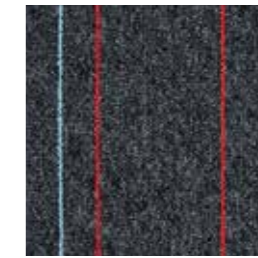
STRATUS STRIPE



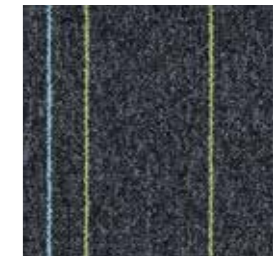
One 07001



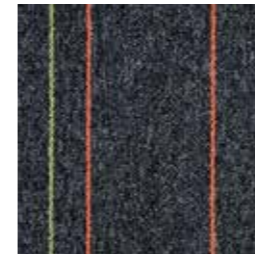
Two 07002



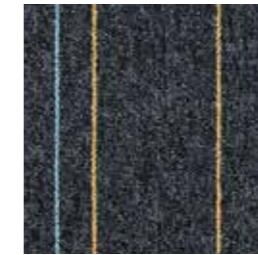
Three 07003



Four 07004



Five 07005



Six 07006

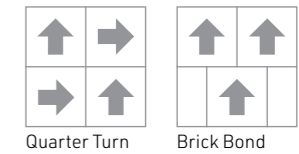
Samples

An accurate colour match can only be achieved by requesting the relevant product sample(s) from Gradus Technical Support on 01625 428922.



Specification:	Tile
Product Dimensions	500mm x 500mm
Product Construction	Tufted Loop Pile
Surface Yarn	ECONYL® Regenerated SDN
Total Carpet Weight	4585 g/m ²
Tufted Pile Weight	615 g/m ²
Primary Backing	Non-woven
Secondary Backing	Bitumen
Total Carpet Thickness	6.8mm

For full specification information visit www.gradus.com



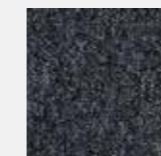
Environmental Profiles
Cert No. ENP 399

BRE Global (BREEAM):

Stratus Stripe achieves either A+ or A across all BREEAM defined building applications against which it has been assessed.
For specific ratings visit: www.greenbooklive.com

Stratus

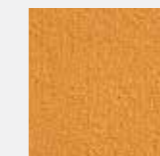
Ideal as a field tile,
page 55



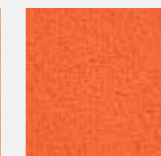
Jet Stream

Emphasis

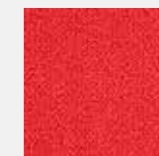
Ideal for accents and features to create interest,
page 53



Gold



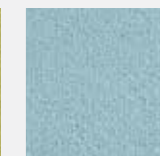
Orange



Red



Green



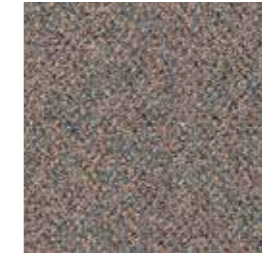
Sky



ADVENTURER



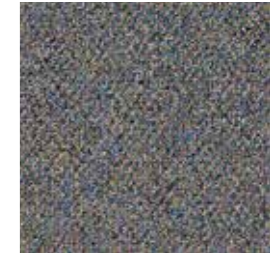
Sandstorm 25017
LRV 13.98



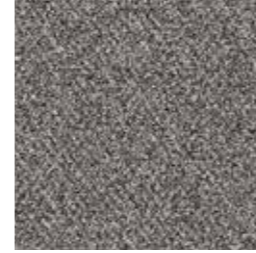
Cliff Shadow 25006
LRV 10.81



Nile Brown 25007
LRV 9.03



Blue Mountain 25008
LRV 9.70



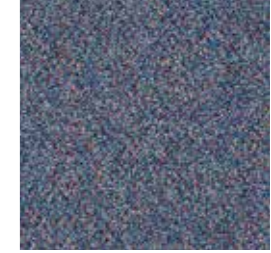
Lunar Gray 25003
LRV 9.82



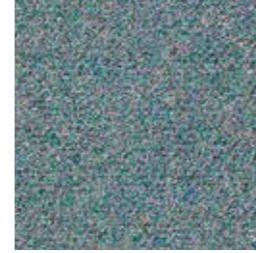
Red Sands 25015
LRV 8.80



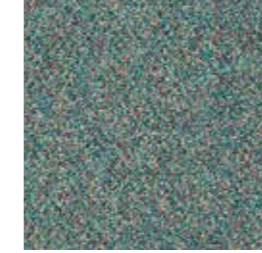
Kalahari 25013
LRV 9.28



Seafarer 25012
LRV 10.67



Aquarelle 25011
LRV 10.94



Gulf Stream 25009
LRV 10.50



Oregon Forest 25010
LRV 7.87



Lost Horizon 25016
LRV 7.42

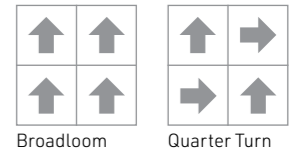
Samples

An accurate colour match can only be achieved by requesting the relevant product sample(s) from Gradus Technical Support on 01625 428922.



Specification:	Tile	Pvc Impervious
Product Dimensions	500mm x 500mm	2 metres
Product Construction	Tufted Loop Pile	Tufted Loop Pile
Surface Yarn	100% Solution Dyed Nylon	100% Solution Dyed Nylon
Total Carpet Weight	4380 g/m ²	4380 g/m ²
Tufted Pile Weight	500 g/m ²	500 g/m ²
Primary Backing	Non-woven	Non-woven
Secondary Backing	Bitumen	pvc
Total Carpet Thickness	6.2mm	6.9mm

For full specification information visit www.gradus.com



Broadloom

Quarter Turn



Environmental Profiles
Cert No. ENP 399

BRE Global (BREEAM):

Adventurer achieves either A+ or A across all BREEAM defined building applications against which it has been assessed.
For specific ratings visit: www.greenbooklive.com



The Dementia Services Development Centre at the University of Stirling have undertaken a review of the Carezone range and have rated its design in relation to dementia design principles and its usability within a dementia-inclusive environment.

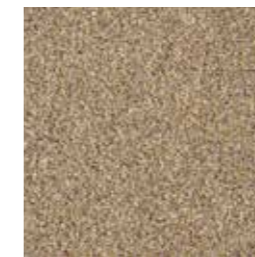
All Carezone colours are rated as Class 1a and are suitable for use in dementia applications. For an environment to be considered 'dementia-inclusive' careful consideration must be given to the specification of adjacent finishes with a maximum contrast of 10 points LRV between adjacent floor surfaces.

CAREZONE

Cut Pile



Warm Stone Cut Pile
07101 LRV 22.40



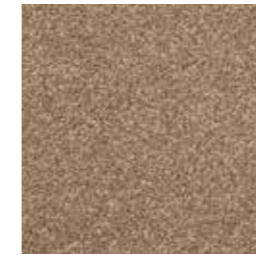
Barley Mist Cut Pile
07114 LRV 19.48



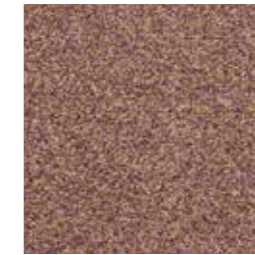
Soft Taupe Cut Pile
07102 LRV 18.70



Natural Truffle Cut Pile
07103 LRV 11.89



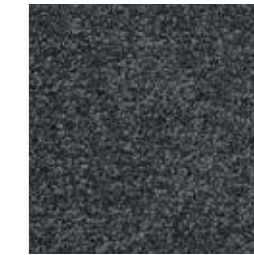
Natural Hessian Cut Pile
07109 LRV 16.02



Lilac Heather Cut Pile
07107 LRV 12.37



Silver Sky Cut Pile
07113 LRV 11.06



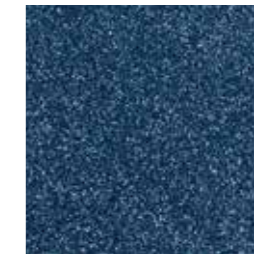
Rich Granite Cut Pile
07104 LRV 5.32



Autumn Leaves Cut Pile
07106 LRV 10.45



Velvet Damson Cut Pile
07108 LRV 4.04



Deep Blue Cut Pile
07112 LRV 5.94

Textured Loop



Warm Stone Textured Loop
07115 LRV 18.75



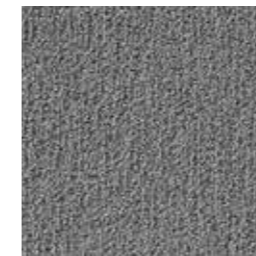
Barley Mist Textured Loop
07120 LRV 19.56



Soft Taupe Textured Loop
07116 LRV 16.04



Natural Truffle Textured Loop
07117 LRV 9.96



Silver Sky Textured Loop
07119 LRV 14.20



Rich Granite Textured Loop
07118 LRV 4.75

Samples

An accurate colour match can only be achieved by requesting the relevant product sample(s) from Gradus Technical Support on 01625 428922.



Specification:	Textured Loop	Cut Pile
Product Dimensions	2 metres or 4 metres	2 metres or 4 metres
Product Construction	Tufted Loop Pile	Tufted Cut Pile
Surface Yarn	100% Polypropylene	100% Polypropylene
Total Carpet Weight	2850 g/m ²	3125 g/m ²
Tufted Pile Weight	960 g/m ²	1050 g/m ²
Primary Backing	Woven Polypropylene	Woven Polypropylene
Secondary Backing	Aquabac Impervious	Aquabac Impervious
Total Carpet Thickness	8.5mm	10mm

For full specification information visit www.gradus.com

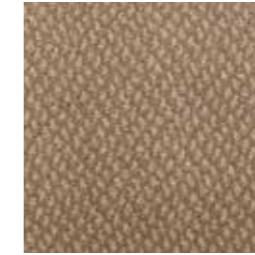


GENUS & VOLNAY

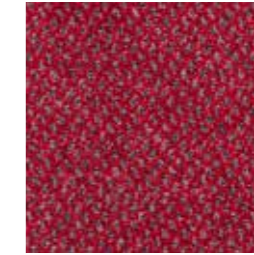
Genus



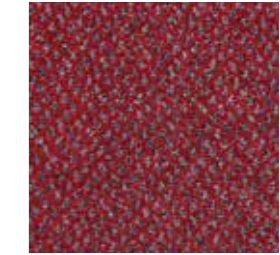
Cornfield 00225
LRV 17.44



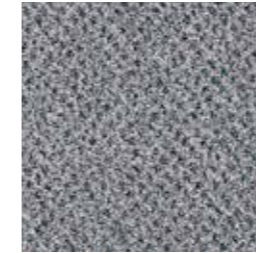
Beachwood 00245
LRV 11.76



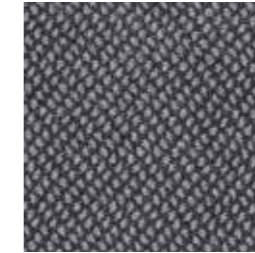
Rich Red 00220
LRV 4.45



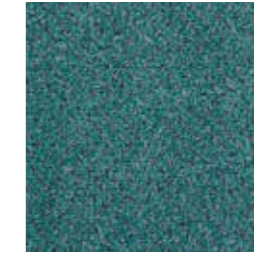
Ancient Ruby 00235
LRV 3.65



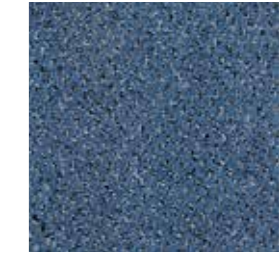
Black Forest 00209
LRV 12.15



Silver Birch 00246
LRV 6.63



Thistle 00215
LRV 6.53



Winter Fjord 00216
LRV 5.46



Graphite Storm 00239
LRV 5.43

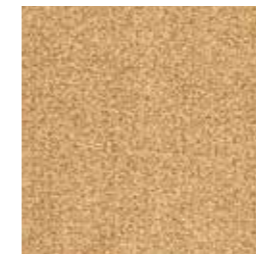


Environmental Profiles
Cert No. ENP 399

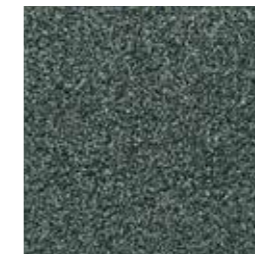
BRE Global (BREEAM):

Genus & Volnay achieve either A+ or A across all BREEAM defined building applications against which they have been assessed. For specific ratings visit: www.greenbooklive.com

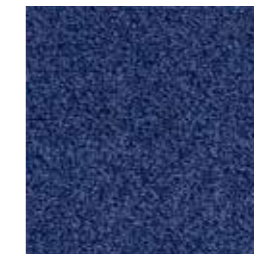
Volnay



Natural Straw 00318
LRV 21.68



Camouflage 00314
LRV 5.26



Azurite Blue 00322
LRV 2.84



Charcoal 00324
LRV 2.75

Samples

An accurate colour match can only be achieved by requesting the relevant product sample(s) from Gradus Technical Support on 01625 428922.

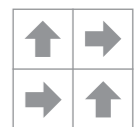


Specification:	Tile	Broadloom	Pvc Impervious
Product Dimensions	500mm x 500mm	4 metres	2 metres
Product Construction	Tufted Cut Pile	Tufted Cut Pile	Tufted Cut Pile
Surface Yarn	100% Marquésa SD	100% Marquésa SD	100% Marquésa SD
Total Carpet Weight	4375 g/m ²	2366 g/m ²	4605 g/m ²
Tufted Pile Weight	1085 g/m ²	1085 g/m ²	1085 g/m ²
Primary Backing	Non-woven	Woven Polypropylene	Non-woven
Secondary Backing	Bitumen	Woven Polypropylene	pvc
Total Carpet Thickness	9mm	8mm	8mm

For full specification information visit www.gradus.com



Broadloom



Quarter Turn

HIGH PERFORMANCE CONTRACTOR FLOORCOVERINGS

- Competitively priced without compromising design or performance

Product range

Lafite Connect	67,69
Lafite Space	71,73
Lafite Plains	75
Latour ²	77
Predator.....	79
Bodega	81





LAFITE CONNECT

Fusion

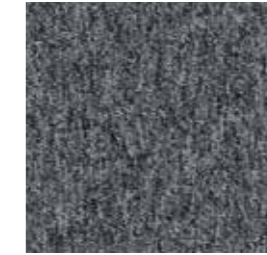


LCFUSION34
LRV 8.49

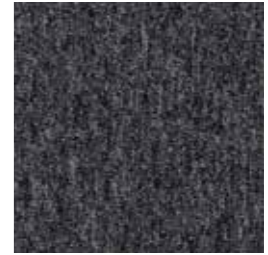


LCFUSION35
LRV 7.18

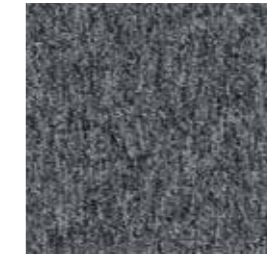
Plains



LC9
LRV 13.72



LC11
LRV 7.20



LC9
LRV 13.72



LC12
LRV 3.55

Samples

An accurate colour match can only be achieved by requesting the relevant product sample(s) from Gradus Technical Support on 01 625 428922.



Specification:	Fusion & Plains
Product Dimensions	500mm x 500mm
Product Construction	Tufted Loop Pile
Surface Yarn	100% Aquafil Solution Dyed Nylon
Total Carpet Weight	4415 g/m ²
Tufted Pile Weight	540 g/m ²
Primary Backing	Non-woven
Secondary Backing	Bitumen
Total Carpet Thickness	5.9mm

For full specification information visit www.gradus.com



Brick Bond
Fusion
Plains

continued...



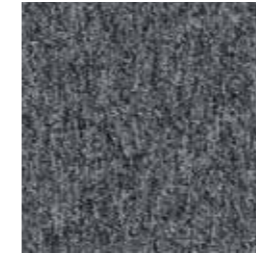
LAFITE CONNECT

Plains

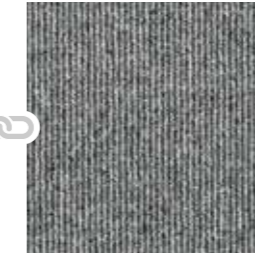
Stripes

Plains

Stripes



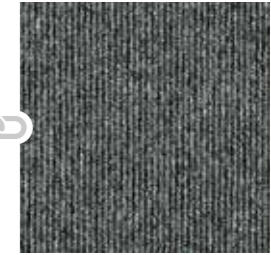
LC9
LRV 13.72



LCS13
LRV 15.49



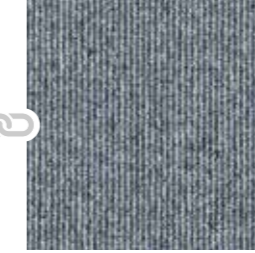
LC11
LRV 7.20



LCS14
LRV 6.96



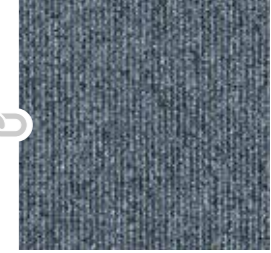
LC7
LRV 7.49



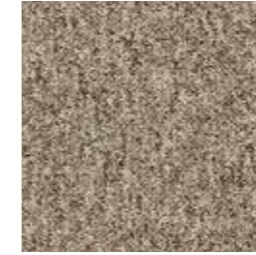
LCS15
LRV 13.70



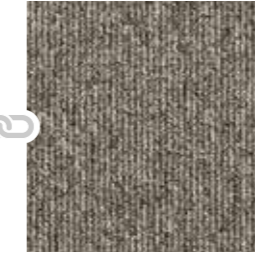
LC8
LRV 5.57



LCS16
LRV 8.48



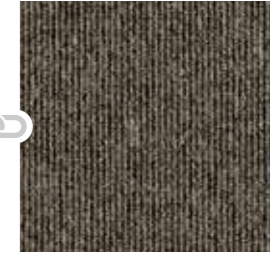
LC1
LRV 14.24



LCS17
LRV 9.19



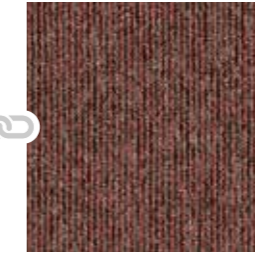
LC2
LRV 6.36



LCS18
LRV 8.16



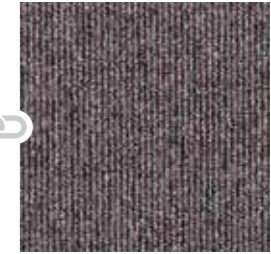
LC3
LRV 5.59



LCS20
LRV 5.19



LC4
LRV 4.20



LCS19
LRV 7.55

Plains and Stripes can be used to define spaces by connecting tones and colours to create a contrast between areas of your floor.

Samples

An accurate colour match can only be achieved by requesting the relevant product sample(s) from Gradus Technical Support on 01 625 428922.



Specification:	Plains & Stripes
Product Dimensions	500mm x 500mm
Product Construction	Tufted Loop Pile
Surface Yarn	100% Aquafil Solution Dyed Nylon
Total Carpet Weight	4415 g/m ²
Tufted Pile Weight	540 g/m ²
Primary Backing	Non-woven
Secondary Backing	Bitumen
Total Carpet Thickness	5.9mm

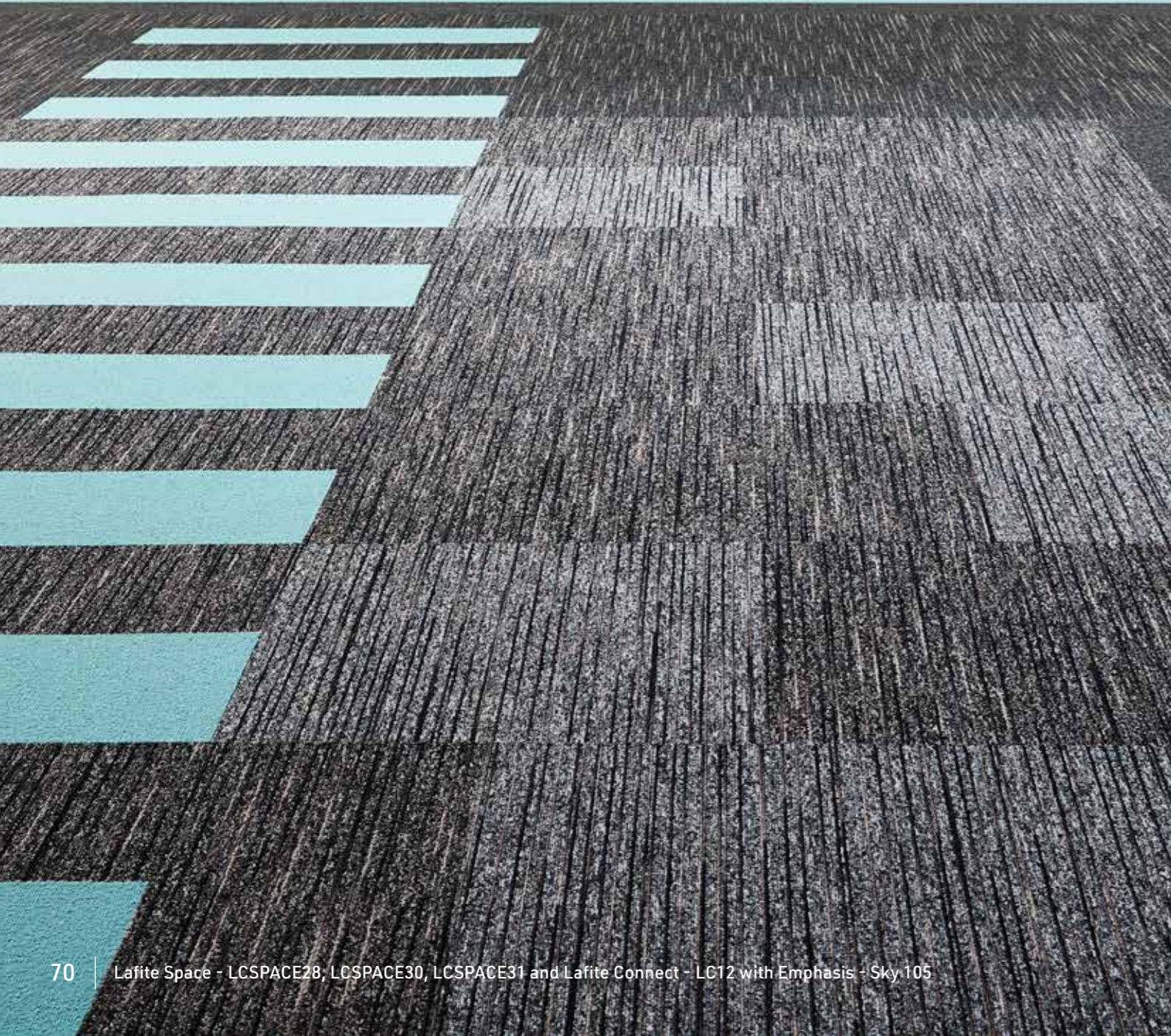
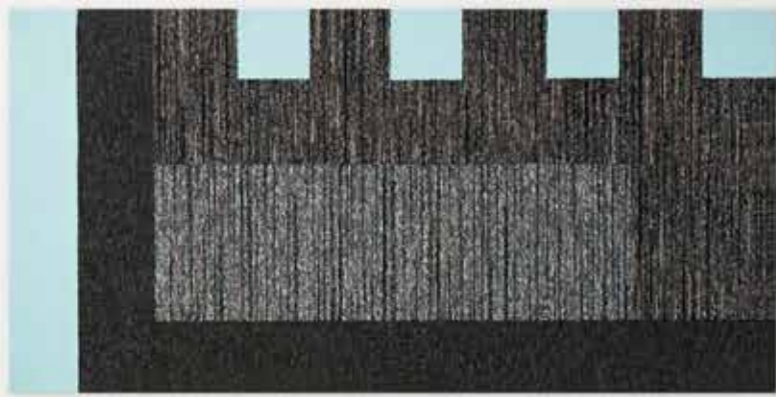
For full specification information visit www.gradus.com



Broadloom
Plains

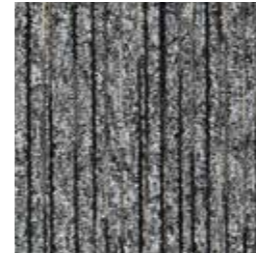


Quarter Turn
Plains
Stripes

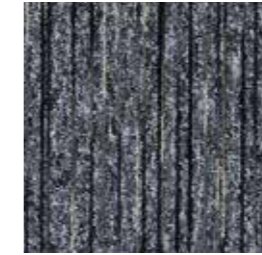


LAFITE SPACE

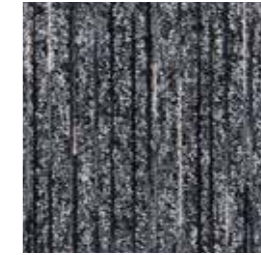
Tile



LCSPACE28
LRV 10.24



LCSPACE29
LRV 7.84



LCSPACE30
LRV 8.36



LCSPACE31
LRV 3.90



LCSPACE32
LRV 9.30



LCSPACE33
LRV 8.02

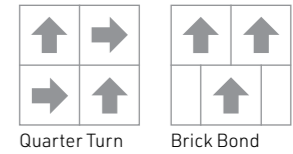
Samples

An accurate colour match can only be achieved by requesting the relevant product sample(s) from Gradus Technical Support on 01625 428922.



Specification:	Tile
Product Dimensions	500mm x 500mm
Product Construction	Tufted Loop Pile
Surface Yarn	Solution Dyed Nylon & Space Dyed Nylon
Total Carpet Weight	4415 g/m ²
Tufted Pile Weight	540 g/m ²
Primary Backing	Non-woven
Secondary Backing	Bitumen
Total Carpet Thickness	5.9mm

For full specification information visit www.gradus.com



Quarter Turn

Brick Bond



Environmental Profiles
Cert No. ENP 399

BRE Global (BREEAM):

Lafite Space achieves either A+ or A across all BREEAM defined building applications against which it has been assessed.
For specific ratings visit: www.greenbooklive.com

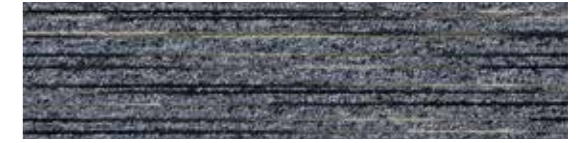


LAFITE SPACE

Plank



LCSPACE28
LRV 10.24



LCSPACE29
LRV 7.84



LCSPACE30
LRV 8.36



LCSPACE31
LRV 3.90



LCSPACE32
LRV 9.30



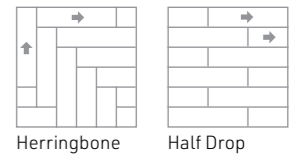
LCSPACE33
LRV 8.02

Samples

An accurate colour match can only be achieved by requesting the relevant product sample(s) from Gradus Technical Support on 01 625 428922.



Specification:	Plank
Product Dimensions	250mm x 1000mm
Product Construction	Tufted Loop Pile
Surface Yarn	Solution Dyed Nylon & Space Dyed Nylon
Total Carpet Weight	4415 g/m ²
Tufted Pile Weight	540 g/m ²
Primary Backing	Non-woven
Secondary Backing	Bitumen
Total Carpet Thickness	5.9mm
For full specification information visit www.gradus.com	



Environmental Profiles
Cert No. ENP 399

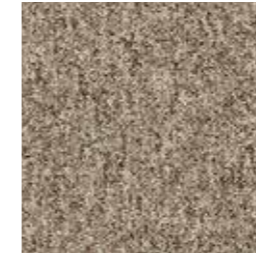
BRE Global (BREEAM):

Lafite Space achieves either A+ or A across all BREEAM defined building applications against which it has been assessed.
For specific ratings visit: www.greenbooklive.com



LAFITE PLAINS

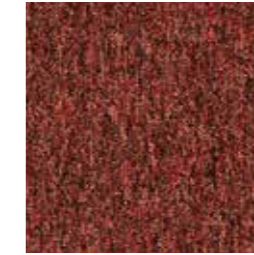
Plains



LC1
LRV 14.24



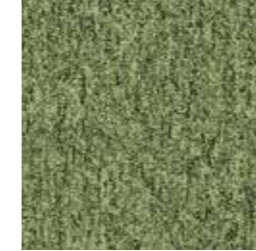
LC2
LRV 6.36



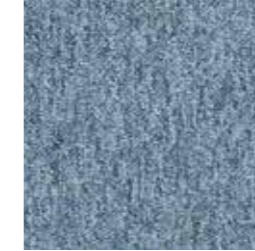
LC3
LRV 5.59



LC4
LRV 4.20



LC5
LRV 10.99



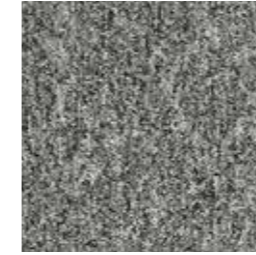
LC6
LRV 12.45



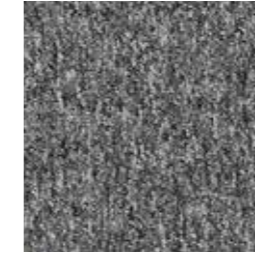
LC7
LRV 7.49



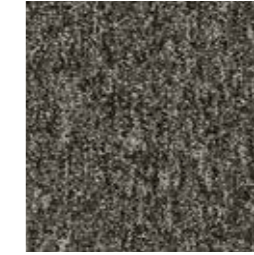
LC8
LRV 5.57



LC9
LRV 13.72



LC10
LRV 9.26



LC11
LRV 7.20



LC12
LRV 3.55

Lafite Connect features a range of complementary designs (Plains, Stripes and Space) that can work together to create interesting and contemporary floor schemes. Lafite Connect yarn is complementary and blended across each design providing creativity and flexibility.

Samples

An accurate colour match can only be achieved by requesting the relevant product sample(s) from Gradus Technical Support on 01625 428922.



Specification:	Plains, Stripes & Design Tile
Product Dimensions	500mm x 500mm
Product Construction	Tufted Loop Pile
Surface Yarn	100% Aquafil Solution Dyed Nylon
Total Carpet Weight	4415 g/m ²
Tufted Pile Weight	540 g/m ²
Primary Backing	Non-woven
Secondary Backing	Bitumen
Total Carpet Thickness	5.9mm

For full specification information visit www.gradus.com



Broadloom
Plains



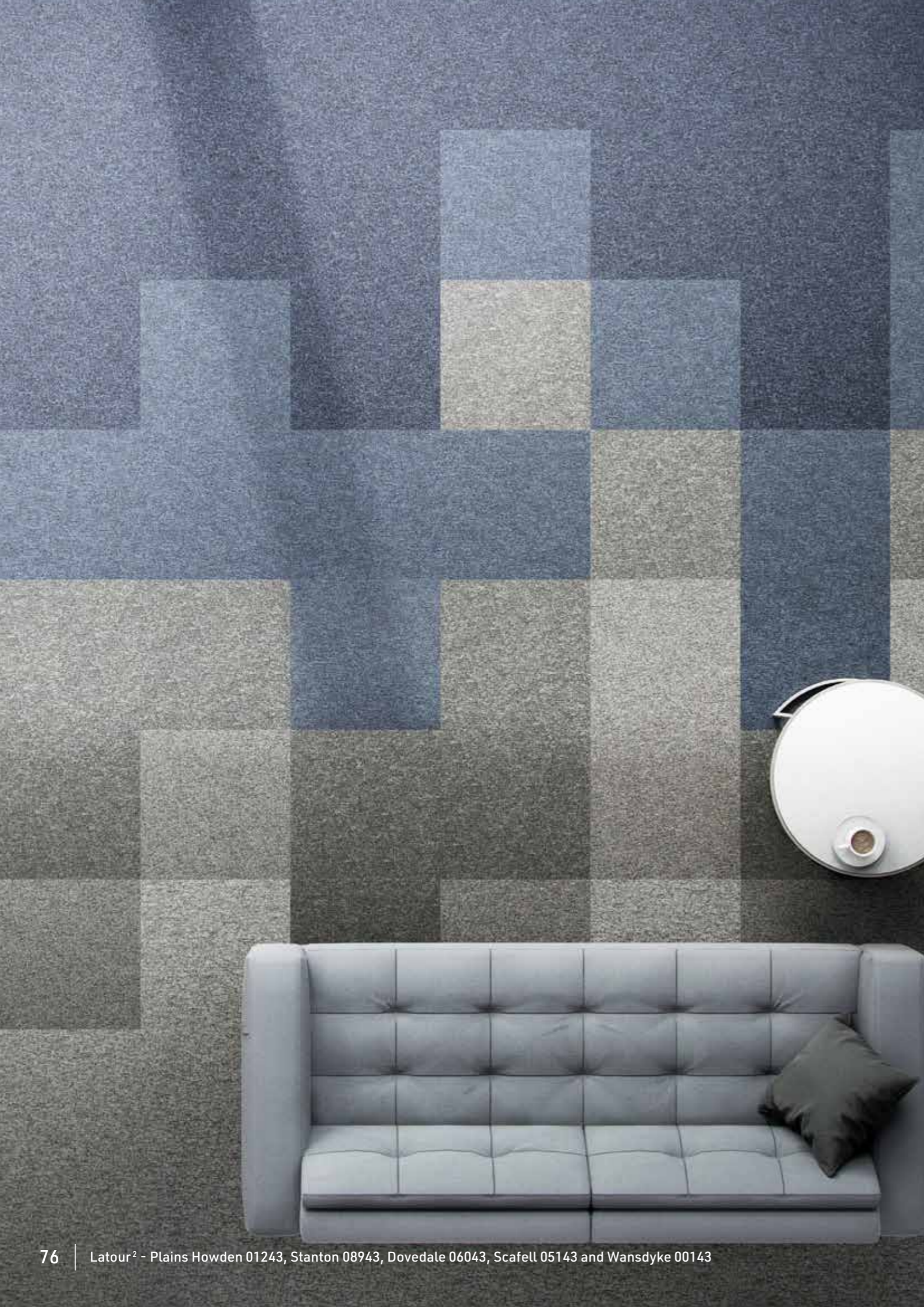
Quarter Turn
Plains
Stripes
Design



Environmental Profiles
Cert No. ENP 399

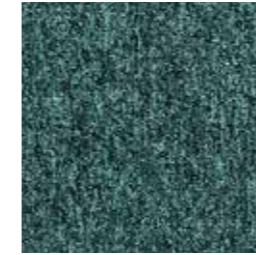
BRE Global (BREEAM):

Lafite Connect achieves either A+ or A across all BREEAM defined building applications against which it has been assessed. For specific ratings visit: www.greenbooklive.com

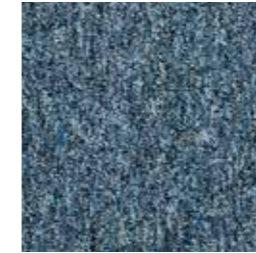


LATOUR²

Plains



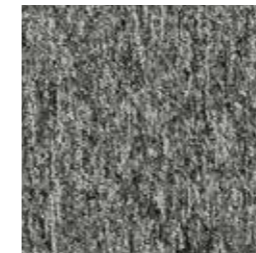
Glenavon 07143
LRV 6.07



Coniston 00243
LRV 6.51



Cheviot 01043
LRV 4.47



Howden 01243
LRV 12.55



Dovedale 06043
LRV 6.33



Glandford 05043
LRV 5.90



Wansdyke 00143
LRV 4.12



Torridon 09143
LRV 5.76



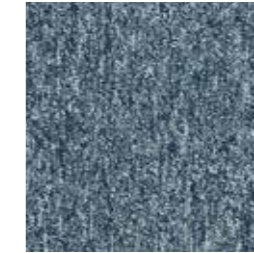
Arfon 04043
LRV 8.52



Cairngorm 04143
LRV 3.50



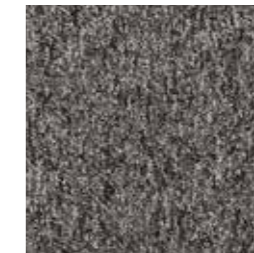
Ravenstone 02243
LRV 16.37



Langdale 01143
LRV 8.51



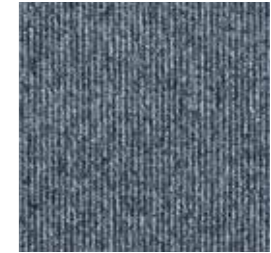
Scafell 05143
LRV 7.30



Stanton 08943
LRV 10.04



Morden 00300
LRV 10.58



Stanage 00900
LRV 8.95



Staffin 00400
LRV 7.36



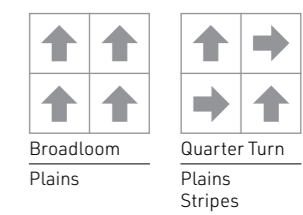
Alston 00500
LRV 8.17

Samples
An accurate colour match can only be achieved by requesting the relevant product sample(s) from Gradus Technical Support on 01625 428922.



Specification:	Tile
Product Dimensions	500mm x 500mm
Product Construction	Tufted Loop Pile
Surface Yarn	100% Aquafil Solution Dyed Nylon
Total Carpet Weight	4320 g/m ²
Tufted Pile Weight	470 g/m ²
Primary Backing	Non-woven
Secondary Backing	Bitumen
Total Carpet Thickness	5.5mm

For full specification information visit www.gradus.com

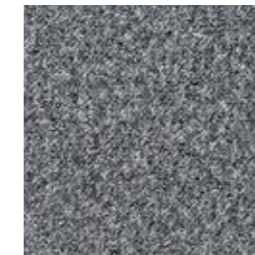


BRE Global (BREEAM):
Latour² achieves either A+ or A across all BREEAM defined building applications against which it has been assessed.
For specific ratings visit: www.greenbooklive.com

PREDATOR



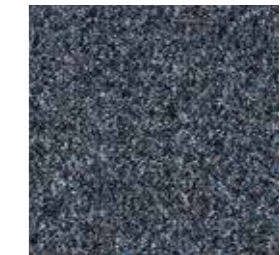
Hawk 03316
LRV 12.73



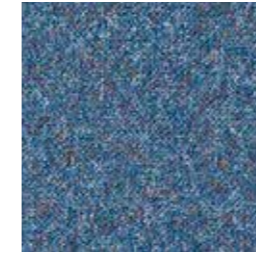
Lynx 03322
LRV 10.00



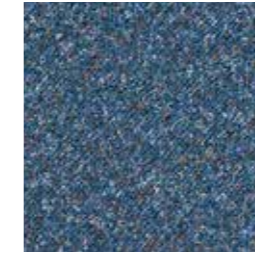
Wolf 03323
LRV 7.90



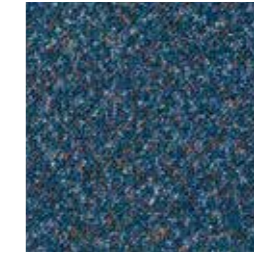
Osprey 03324
LRV 4.64



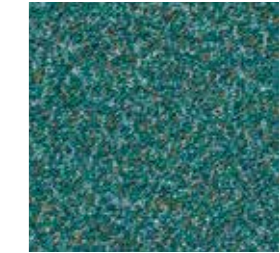
Barracuda 03305
LRV 9.84



Stingray 03308
LRV 6.95



Orca 03303
LRV 6.06



Python 03307
LRV 8.17



Piranha 03320
LRV 5.11



Puma 03301
LRV 8.07



Panther 03314
LRV 5.28

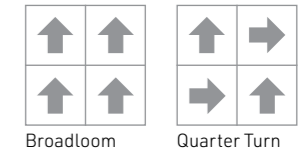
Samples

An accurate colour match can only be achieved by requesting the relevant product sample(s) from Gradus Technical Support on 01625 428922.



Specification:	Tile
Product Dimensions	500mm x 500mm
Product Construction	Tufted Loop Pile
Surface Yarn	100% Aquafil Nylon
Total Carpet Weight	4400 g/m ²
Tufted Pile Weight	525 g/m ²
Primary Backing	Non-woven
Secondary Backing	Bitumen
Total Carpet Thickness	6.5mm

For full specification information visit www.gradus.com



Environmental Profiles
Cert No. ENP 399

BRE Global (BREEAM):

Predator achieves either A+ or A across all BREEAM defined building applications against which it has been assessed.
For specific ratings visit: www.greenbooklive.com



BODEGA



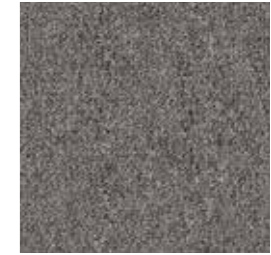
Oatmeal 03807
LRV 16.72



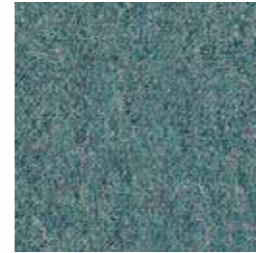
Barley 03816
LRV 15.94



Soft Sage 03825
LRV 14.34



Anthracite 03808
LRV 9.05



Mermaid 03812
LRV 8.67



Marine Blue 03823
LRV 7.46

Samples

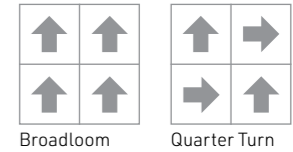
An accurate colour match can only be achieved by requesting the relevant product sample(s) from Gradus Technical Support on 01625 428922.



Specification:	Tile	Broadloom
Product Dimensions	500mm x 500mm	4 metres
Product Construction	Tufted Loop Pile	Tufted Loop Pile
Surface Yarn	100% Polypropylene	100% Polypropylene
Total Carpet Weight	4500 g/m ²	1906 g/m ²
Tufted Pile Weight	678 g/m ²	678 g/m ²
Primary Backing	Non-woven	Woven Polypropylene
Secondary Backing	Bitumen	Woven Polypropylene
Total Carpet Thickness	6mm	6mm

For full specification information visit www.gradus.com

* Minimum quantity 300 sq metres, a maximum of 5% overage applies.



Environmental Profiles
Cert No. ENP 399

BRE Global (BREEAM):

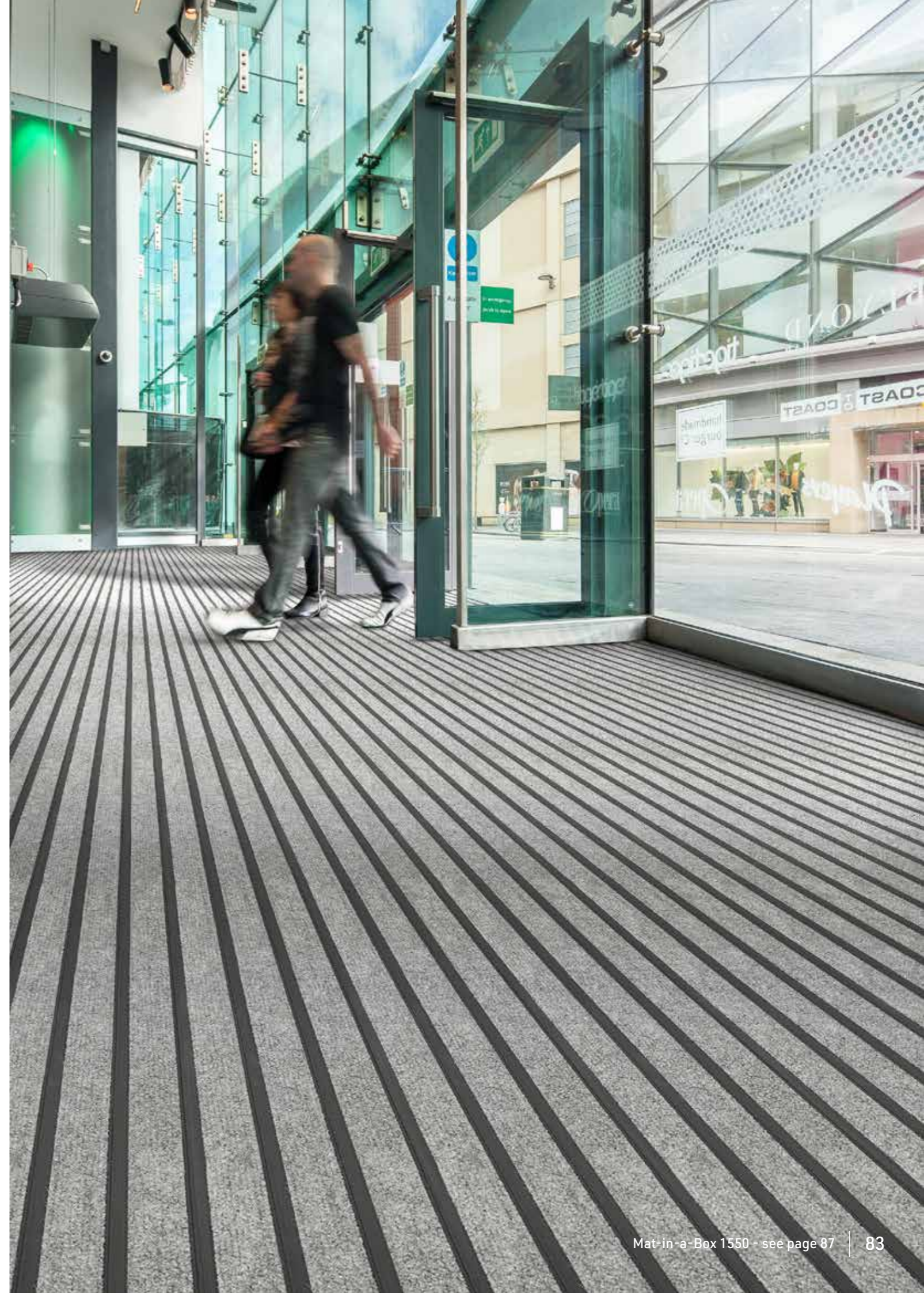
Bodega achieves either A+ or A across all BREEAM defined building applications against which it has been assessed.
For specific ratings visit: www.greenbooklive.com

HYBRID BARRIER MATTING

- A range of modular barrier matting products ideal for use in interior entrances and access points. Hybrid barrier matting is quick and easy to install and can be cut and trimmed on-site
- Hybrid barrier matting can be used as a stand-alone mat or can be used in conjunction with secondary barrier matting

Product range

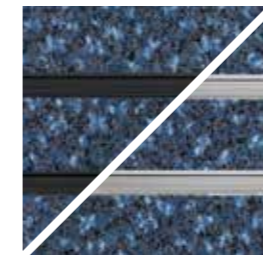
Mat-in-a-Box 6000	85
Mat-in-a-Box 5000	86
Mat-in-a-Box 1550	87
Access 6000	89
Access 5000	89



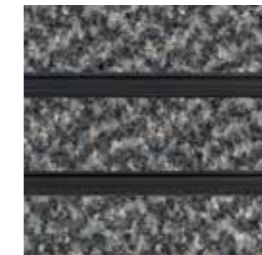


MAT-IN-A-BOX® A modular barrier matting system that is quick and easy to install

Mat-in-a-Box® 6000



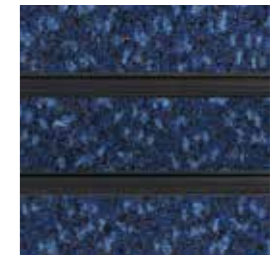
Indigo



Shadow



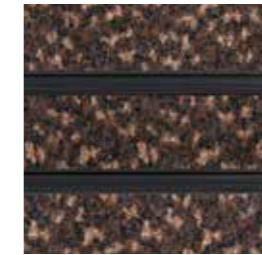
Nickel



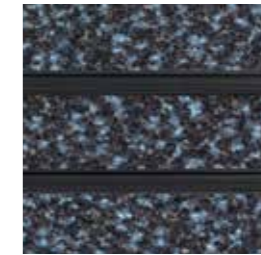
Atlantic



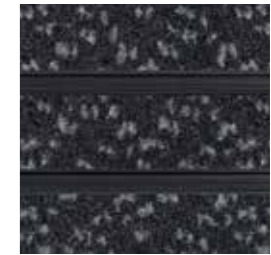
Rosemary



Walnut



Galaxy



Nightfall

All colours available in Black or Glacier Grey bases

Samples

An accurate colour match can only be achieved by requesting the relevant product sample(s) from Gradus Technical Support on 01625 428922.

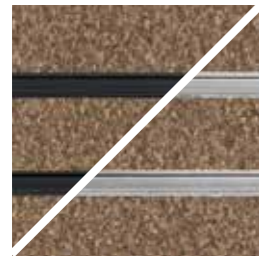


Specification:	Mat-in-a-Box 6000
Product Dimensions	2 metre lengths
Base	Black or Grey PVC-u
Wiper	ECONYL® Regenerated SDN
Construction	Closed
Total Thickness	12mm and 18mm
Supplied in components	Standard box contains 2 square metres (16 x 2m lengths), edging strip (1 x 2m) and support piece (1 x 2m)
For full specification information visit www.gradus.com	

ECONYL®
ENDLESS POSSIBILITIES

MAT-IN-A-BOX®

Mat-in-a-Box® 5000



Corncrake



Kestrel



Redpoll



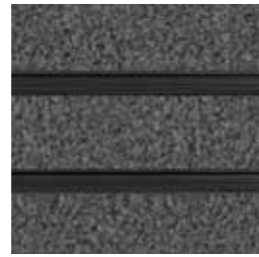
Swallow



Shelduck



Cuckoo



Falcon



Moorhen

Samples

An accurate colour match can only be achieved by requesting the relevant product sample(s) from Gradus Technical Support on 01625 428922.



Jackdaw

Specification:	Mat-in-a-Box 5000
Product Dimensions	2 metre lengths
Base	Black or Grey PVC-u
Wiper	ECONYL® Regenerated SDN
Construction	Closed
Total Thickness	12mm and 18mm
Supplied in components	Standard box contains 2 square metres (16 x 2m lengths), edging strip (1 x 2m) and support piece (1 x 2m)

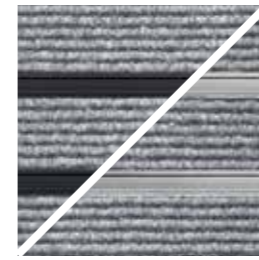
For full specification information visit www.gradus.com

All colours available in Black or Glacier Grey bases

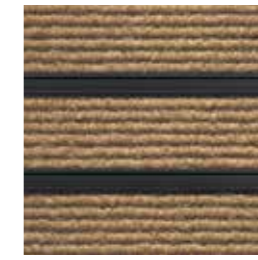
Mat-in-a-Box 5000 - Cuckoo



Mat-in-a-Box® 1550



Calculus



Terra



Tempestas

All colours available in Black or Glacier Grey bases

Samples

An accurate colour match can only be achieved by requesting the relevant product sample(s) from Gradus Technical Support on 01625 428922.



Specification:	Mat-in-a-Box 1550
Product Dimensions	2 metre lengths
Base	Black or Grey PVC-u
Wiper	100% Polypropylene
Construction	Closed
Total Thickness	12mm
Supplied in components	Standard box contains 2 square metres (16 x 2m lengths), edging strip (1 x 2m) and support piece (1 x 2m)

For full specification information visit www.gradus.com

Mat-in-a-Box 1550 - Calculus

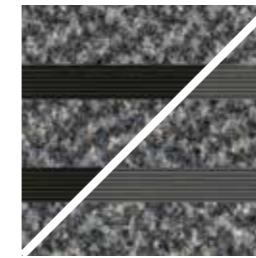




ACCESS®

A modular barrier matting system that is quick and easy to install

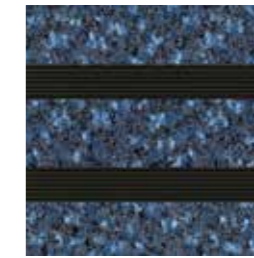
Access® 6000



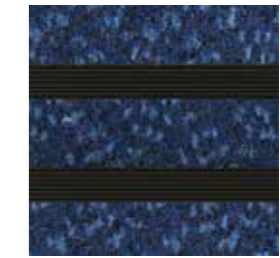
Shadow



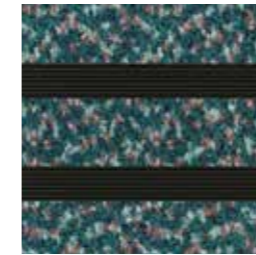
Nickel



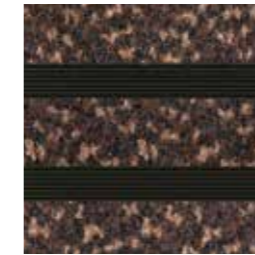
Indigo



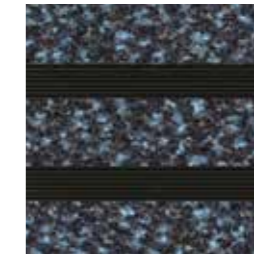
Atlantic



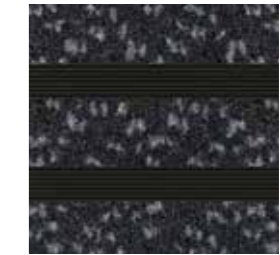
Rosemary



Walnut



Galaxy



Nightfall

All colours available in Black or Grey bases

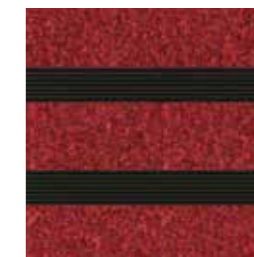
Access® 5000



Corncrake



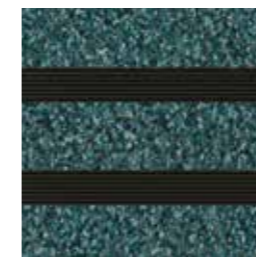
Kestrel



Redpoll



Swallow



Shelduck



Cuckoo



Falcon



Moorhen



Jackdaw

All colours available in Black or Grey bases

Samples

An accurate colour match can only be achieved by requesting the relevant product sample(s) from Gradus Technical Support on 01625 428922.



Specification:	Access 6000 & 5000
Product Dimensions	0.5m x 2m modules
Base	Black or Grey Rubber
Wiper	ECONYL® Regenerated SDN
Construction	Closed
Total Thickness	12mm and 17mm
Supplied in components	0.5m x 2m modules and supplied oversized for shaping and trimming on-site. Supplied with spacer strips

For full specification information visit www.gradus.com

SECONDARY BARRIER MATTING

- High performance secondary barrier matting provides a solution for entrances, breakout areas or any heavy duty traffic area where contamination needs to be treated effectively
- Unique yarn system removes soil from foot traffic whilst absorbing moisture and being easy to clean
- Colours and designs complement any design scheme

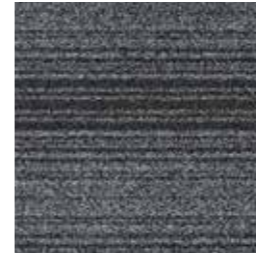
Product range

Boulevard 7000.....	93
Boulevard Stripe.....	95
Boulevard 6000.....	97
Boulevard 5000.....	99
Boulevard 1500.....	101

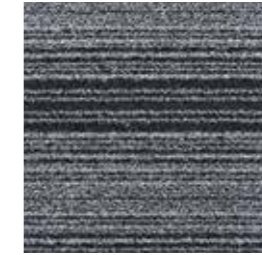




BOULEVARD 7000



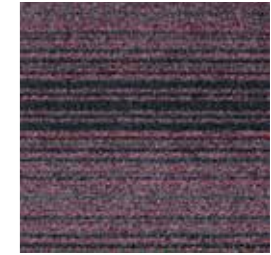
Black Ash
LRV 3.06



Gray Birch
LRV 5.60



Hazelnut
LRV 2.37



Red Oak
LRV 1.98

Samples

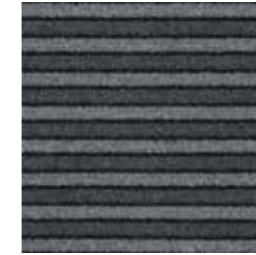
An accurate colour match can only be achieved by requesting the relevant product sample(s) from Gradus Technical Support on 01625 428922.



Specification:	Sheet
Product Dimensions	+/- 20m x 2m
Product Construction	Tufted Cut Pile
Surface Yarn	100% Solution Dyed Nylon
Total Carpet Weight	+/- 3525 g/m ²
Tufted Pile Weight	+/- 825 g/m ²
Primary Backing	Non-woven Polyester/Polyamide
Secondary Backing	pvc
Total Carpet Thickness	+/- 8mm
For full specification information visit www.gradus.com	



BOULEVARD STRIPE



Maggie
LRV 3.85



Raven
LRV 2.48

Samples

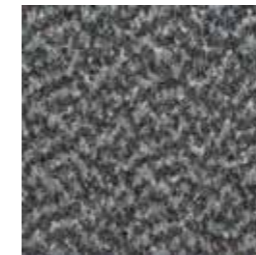
An accurate colour match can only be achieved by requesting the relevant product sample(s) from Gradus Technical Support on 01625 428922.



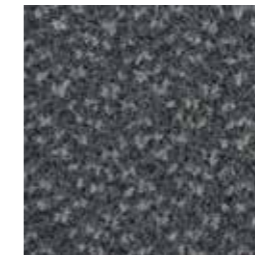
Specification:	Sheet
Product Dimensions	25m x 2m
Product Construction	Tufted Cut Pile
Surface Yarn	ECONYL® Regenerated SDN
Total Carpet Weight	4300 g/m ²
Tufted Pile Weight	800 g/m ²
Primary Backing	Non-woven
Secondary Backing	pvc
Total Carpet Thickness	9mm
For full specification information visit www.gradus.com	



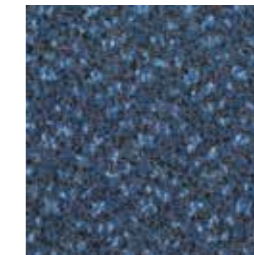
BOULEVARD 6000



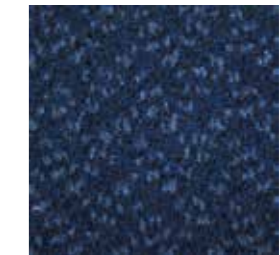
Shadow
LRV 5.36



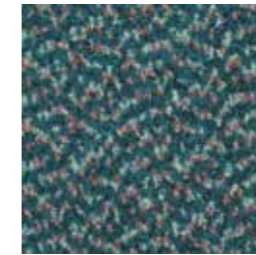
Nickel
LRV 3.70



Indigo
LRV 4.01



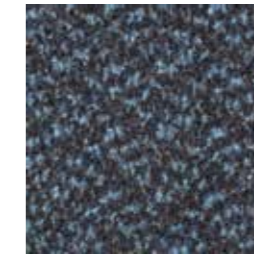
Atlantic
LRV 1.90



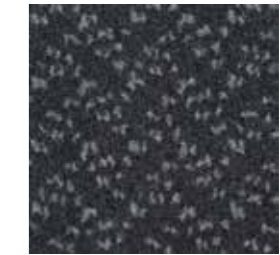
Rosemary
LRV 4.45



Walnut
LRV 2.86



Galaxy
LRV 2.56



Nightfall
LRV 1.48

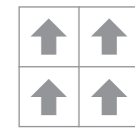
Samples

An accurate colour match can only be achieved by requesting the relevant product sample(s) from Gradus Technical Support on 01625 428922.



Specification:	Tile	Sheet
Product Dimensions	500mm x 500mm	25m x 2m
Product Construction	Tufted Cut Pile	Tufted Cut Pile
Surface Yarn	ECONYL® Regenerated SDN	ECONYL® Regenerated SDN
Total Carpet Weight	4750 g/m ²	4750 g/m ²
Tufted Pile Weight	950 g/m ²	950 g/m ²
Primary Backing	Non-woven	Non-woven
Secondary Backing	Bitumen	pvc
Total Carpet Thickness	9mm	8mm

For full specification information visit www.gradus.com



Broadloom



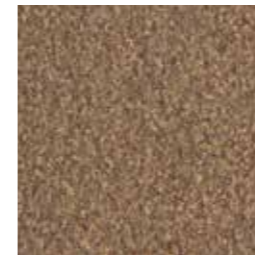
Environmental Profiles
Cert No. ENP 399

BRE Global (BREEAM):

For specific ratings visit: www.greenbooklive.com



BOULEVARD 5000



Corncrake
LRV 9.52



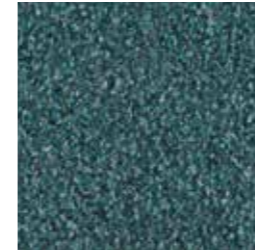
Kestrel
LRV 5.42



Redpoll
LRV 4.14



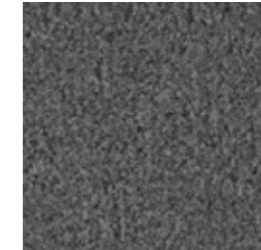
Swallow
LRV 2.08



Shelduck
LRV 5.20



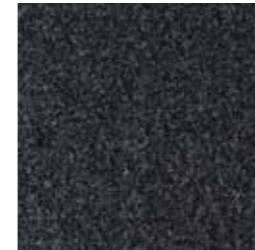
Cuckoo
LRV 5.63



Falcon
LRV 5.11



Moorhen
LRV 2.98



Jackdaw
LRV 1.73

Samples

An accurate colour match can only be achieved by requesting the relevant product sample(s) from Gradus Technical Support on 01625 428922.



Specification:	Tile	Sheet
Product Dimensions	500mm x 500mm	25m x 2m
Product Construction	Tufted Cut Pile	Tufted Cut Pile
Surface Yarn	ECONYL® Regenerated SDN	ECONYL® Regenerated SDN
Total Carpet Weight	4600 g/m ²	4600 g/m ²
Tufted Pile Weight	800 g/m ²	800 g/m ²
Primary Backing	Non-woven	Non-woven
Secondary Backing	Bitumen	pvc
Total Carpet Thickness	8mm	7.5mm

For full specification information visit www.gradus.com



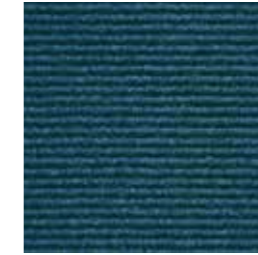
Broadloom



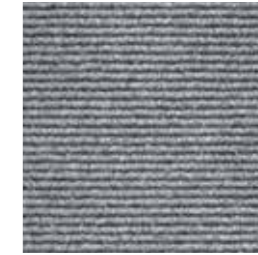
BOULEVARD 1500



Terra
LRV 10.89



Marinus
LRV 2.71



Calculus
LRV 9.03



Tempestas
LRV 2.14

Samples

An accurate colour match can only be achieved by requesting the relevant product sample(s) from Gradus Technical Support on 01625 428922.



Specification:	Sheet
Product Dimensions	15m x 2m
Product Construction	Needlepunch
Surface Yarn	100% Polypropylene
Total Carpet Weight	3000 g/m ²
Tufted Pile Weight	1600 g/m ²
Backing	Rubber
Total Carpet Thickness	9mm

For full specification information visit www.gradus.com



Dry adhesive mesh for peelable carpet fixing

Fully releasable environmentally friendly installation system for commercial use.

- Totally recyclable
- Quick, easy and clean installation and removal
- No odours or VOC problems, which are commonly associated with wet adhesives
- Ideal for both broadloom and carpet tile installations
- Installs and performs over virtually any surface, including carpet, concrete and vinyl
- Permits instant re-use of the floor
- Pressure sensitive bond becomes stronger in use
- Highly resistant to rolling loads
- Dry bond adhesive mesh creates total edge to edge adhesion between carpet and sub surface

Lok-Lift permits carpet to be laid on many existing floor finishes saving costs and time, whilst avoiding mess and disruption.

CASE STUDIES

The following pictures show various installations for Gradus carpets:



Humber Enterprise Park
Lafite Space LCSPACE30



New Look Retailers, Weymouth Support Centre
Times Square - Grey 06601



The Meadows School, Leek
Adventurer - Lost Horizon 25016



Walkden High School
Stratus - Storm Surge 06504



Corner Block Offices - Manchester
Lunar - Moretus 07402



University of Essex
Urban Myth - Lead 07304, Steel 07303 and Sapphire 07310



The Spire Hospital, Southampton
Cityscene - Shale 06106



Nuffield Health, The Grosvenor Hospital, Chester
Genus - Cornfield 00225



Laura Mitchell Health & Wellbeing Centre, Halifax
Streetwise Design - Originals Iron 773 and Flint 772



GradPad Wood Lane Studios, London
Times Square - Grey 06601 and Natural 06602



Tranmere Rovers Training Ground - Solar Campus
Boulevard 6000 - Walnut



Steel City House, Sheffield
Times Square - Grey 06601



FUNDAMENTALS

A **FUSION** OF PRODUCTS & VALUES

Gerflor and Gradus offer products which are ideal for use in a wide variety of applications including healthcare, commercial office, education, retail, hospitality & leisure and housing. Products can be combined to provide a complete package that balances performance, aesthetics and cost alongside environmentally responsible manufacturing processes.

A **FRESH** APPROACH

We believe passionately in providing the customer with the very best in terms of service. Through our combined team we can offer expert advice to help with product selection backed up with extensive UK stocks to ensure our products are delivered on-time, every-time.

A NEW LEVEL
OF INNOVATION,
QUALITY, SERVICE
& TEAMWORK



CREATION LVT
TARASAFE
TARAFLEX
TECHNICAL TILES
CARPETS



STAIR EDGINGS
FLOOR TRIMS
MATTING
WALL PROTECTION
LIGHTING



NEXT DAY SERVICE
PRODUCT EXPERTISE
WARRANTY
SUSTAINABILITY



HOUSING
RETAIL
HOSPITALITY
TRANSPORT



EDUCATION
HEALTHCARE
COMMERCIAL OFFICE
SPORTS

gerflor.co.uk
gerflor.ie
gradus.com

Uniclass		
Pr_35_57_11_62 / 91 / 26		
CI/SfB	(43)	Tn6

GRADUS

Gradus Carpets, Park Green, Macclesfield, Cheshire, SK11 7LZ, UK Tel: 01625 859000
For enquiries outside the UK and Eire contact Gradus International on +44 (0)1625 613780

